

# Stream Corridor Assessment & Tree Planting

Jon Bowman

*Forest Conservation & Landscape Specialist*

Carroll County Resource Management

# What's wrong with our streams ?



# What are the objectives of the SCA?



- Provide list of observable environmental problems within a stream and along its corridors.
- Provide sufficient data for each problem to determine severity and correctability.
- Prioritize restoration efforts based on information collected for each impairment.



# Potential Impairments

Not Carroll  
County



Erosion

Channel  
Alteration

Inadequate  
Buffer

Trash Dumps

Exposed Pipes  
and Pipe Outfalls

Fish Blockages

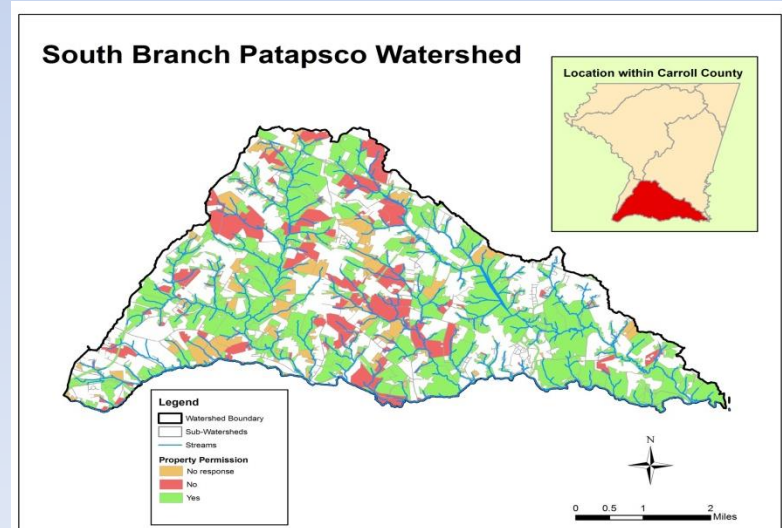
Unusual  
Conditions

In-Stream  
Construction



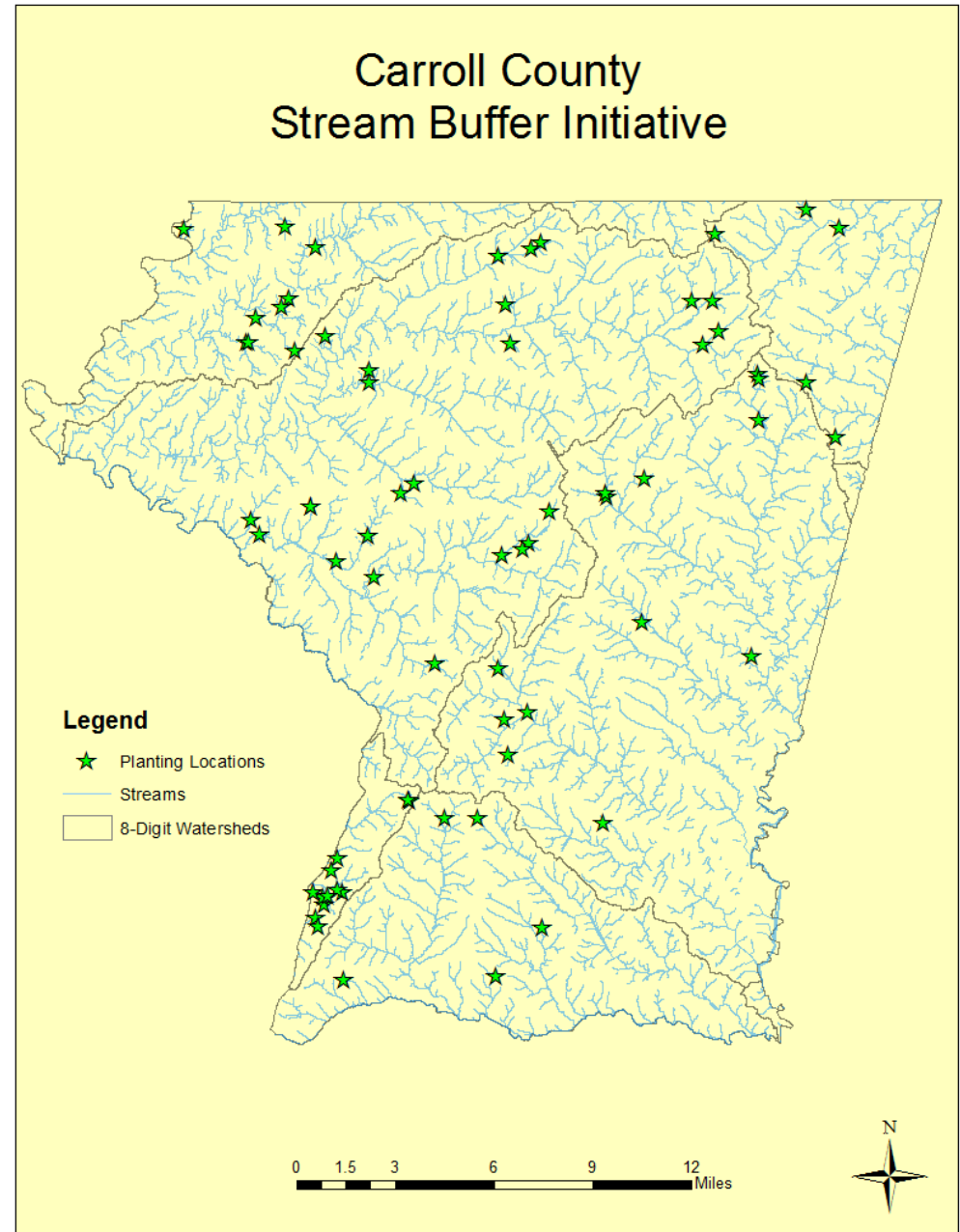
# Stream Corridor Assessments

Watersheds Assessed					
8-Digit Watershed	Major Basin	Miles Assessed	Total Miles	% Assessed	Year Assessed
Prettyboy	Gunpowder	80	97	82%	2011
Liberty	Patapsco	255	458	56%	2012
South Branch Patapsco	Patapsco	156	218	72%	2013
Lower N. Branch Patapsco	Patapsco	6	6	100%	2014
Lower Monocacy	Monocacy/Potomac	10	23	43%	2014
Conewago Creek	Susquehanna	11	18	61%	2014
Upper Monocacy	Monocacy/Potomac	71	128	55%	2015
Double Pipe	Monocacy/Potomac	266	514	52%	2016
Loch Raven	Gunpowder	2	3	66%	2016
<b>Total:</b>		<b>786</b>	<b>1,464</b>	<b>54%</b>	





# Stream Buffer Initiative



# The process of planting a stream buffer



- **Planning-** a planting plan is created showing planting area, number and species of trees
- **Bidding-** project is advertised to planting contractors through a competitive bid process
- **Implementation-** planting area is prepared, trees planted, shelters installed, trees mulched
- **Maintenance!!!-** mow between rows, trim or spray around base of trees, reset shelters as needed, monitor for any problems



# Why plant stream buffers?

- Absorb nutrients
- Capture sediment
- Manage storm water
- Stabilize stream banks
- Feed the aquatic system
- Cool stream temperature
- Improve habitat

