



Homeowner

BMPs

Practical Stormwater Pollution Prevention

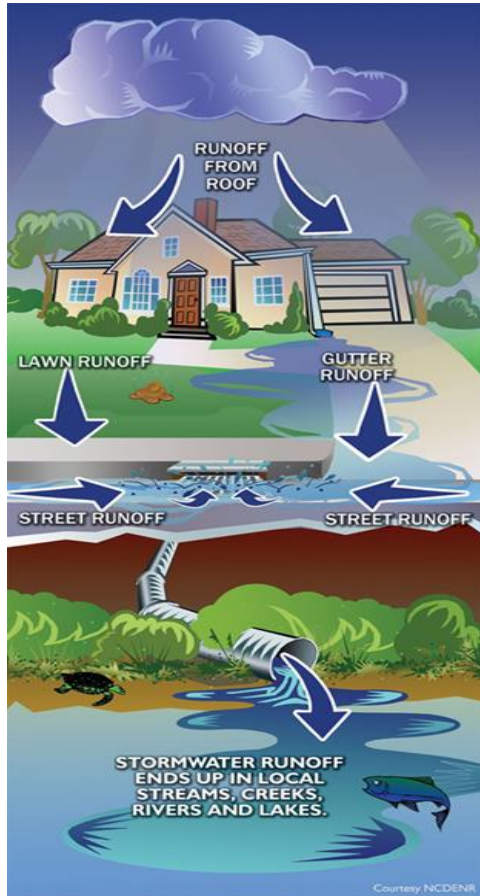
Best Management Practices

You Can Do Around Home



Homeowner *BMPs*

Practical Stormwater Pollution Prevention *Best Management Practices* You Can Do Around Home



What is Stormwater Runoff?

Stormwater runoff occurs when precipitation from rain or snowmelt flows over the ground. Impervious surfaces like driveways, sidewalks, and streets prevent stormwater from naturally soaking into the ground.

What is Stormwater Pollution?

Stormwater can pick up debris, chemicals, dirt, and other pollutants and flow into a storm sewer system or directly to a drainage ditch, stream, wetland, pond, river, reservoir, bay or coastal water.

Homeowner *BMPs*

Practical Stormwater Pollution Prevention Best Management Practices You Can Do Around Home

Why is it so important for homeowners to take action?



By the 1970's water pollution was causing degradation of surface waters making them unsafe for drinking, fishing, swimming, and other activities.

Homeowner *BMPs*

Practical Stormwater Pollution Prevention *Best Management Practices* You Can Do Around Home

Why is it so important for homeowners to take action?



Chesapeake Bay



Carroll County Waters



Chesapeake Bay Watershed



Homeowner *BMPs*

Practical Stormwater Pollution Prevention *Best Management Practices* You Can Do Around Home

Water Pollution

(A Wide Variety of Sources)

Point Source Pollution



Industrial:

WWTP: Treated Effluent
Manufacturing &
Operational

Nonpoint Source Pollution



Residential:

Fertilizers
Automotive Fluids
Sediment
Chemicals

Commercial



Urban:

Road salts,
Automotive Fluids
Sediment
Chemicals

Industrial



Agriculture:

Nutrients
Pesticides
Sediment

Spills / Dumping

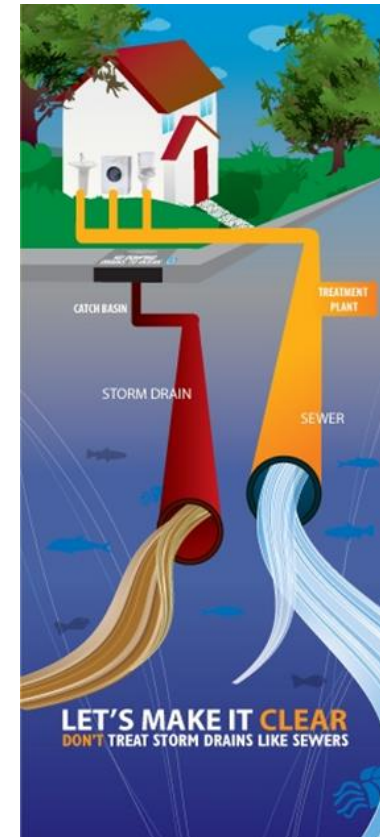


Homeowner *BMPs*

Practical Stormwater Pollution Prevention *Best Management Practices* You Can Do Around Home



Stormwater Conveyance

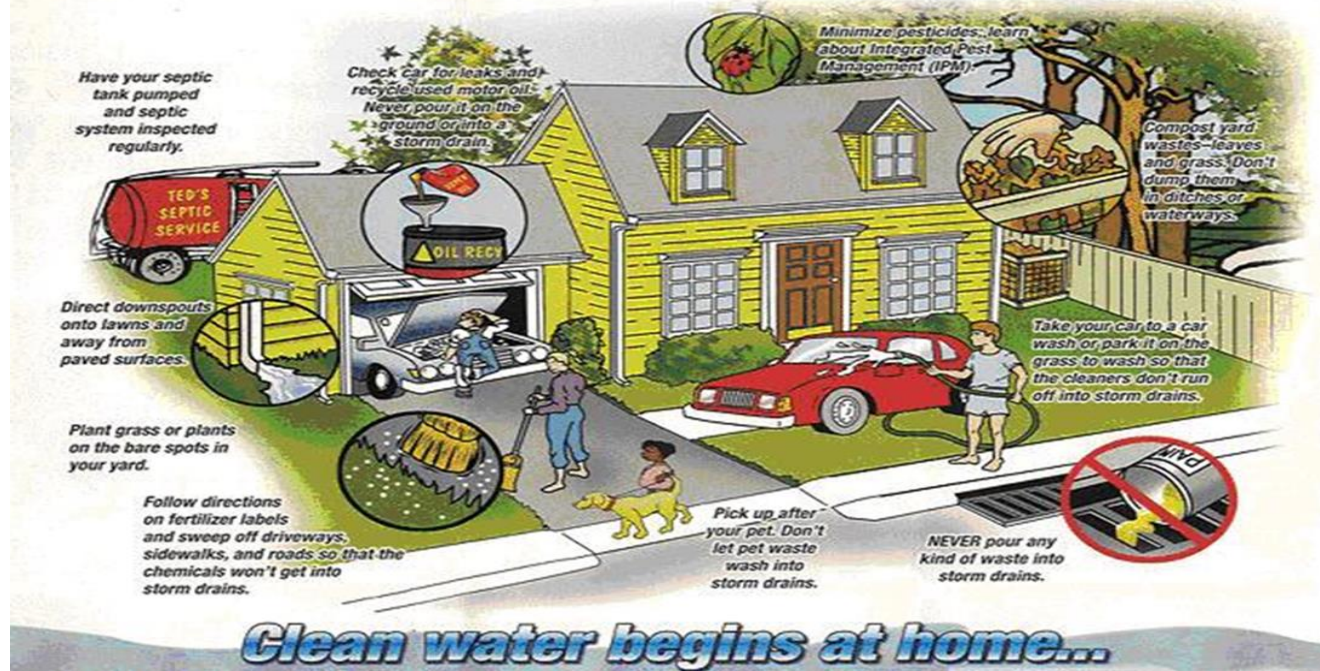


Homeowner *BMPs*

Practical Stormwater Pollution Prevention *Best Management Practices* You Can Do Around Home

Best Management Practice?

An intentional measure or action taken to help reduce or eliminate stormwater runoff and prevent stormwater pollution.



Homeowner *BMPs*

Practical Stormwater Pollution Prevention Best Management Practices You Can Do Around Home

Vehicle & Garage

Use a commercial car wash or wash your car on a lawn.



Check your car for leaks and repair any found as soon as possible.

Clean up spilled fluids with an absorbent material.

Recycle used oil and other automotive fluids.



Homeowner *BMPs*

Practical Stormwater Pollution Prevention **Best Management Practices** *You Can Do Around Home*



Shovel frequently to help limit the amount of salt or deicer to be used.

Use enough de-icing salts and chemicals to be safe without over applying.

Use bird seed to help with traction. Birds will help with clean-up!

Sweep up any leftover de-icing materials after snow events to be reused.

Snow and Ice Removal / Deicers



Homeowner *BMPs*

Practical Stormwater Pollution Prevention *Best Management Practices* You Can Do Around Home

Reduce Waste and Recycle



Maintain well-fitted lids on trash and recycling containers.

See Maria at the recycling booth for additional, specific information!

Recyclable Materials:

- **Glass jars/bottles**
- **Aluminum, tin, steel cans/containers and foil**
- **Cereal boxes and other paper board boxes**
- **Cardboard**
- **Books and Magazines**
- **Plastic Bags (bagged together)**
- **Plastic bottles**
- **Newspapers**
- **Plastic tubs and wide-mouth containers**



Homeowner *BMPs*

Practical Stormwater Pollution Prevention *Best Management Practices* You Can Do Around Home

Household Hazardous Waste



Hazardous household wastes include:

- **Cleaners**
- **Paint and preservatives**
- **Pesticides**
- **Automotive products**
- **Medicines and cosmetics**
- **Home hobby supplies**

Utilize the Spring Clean-up on May 13th, 2017.

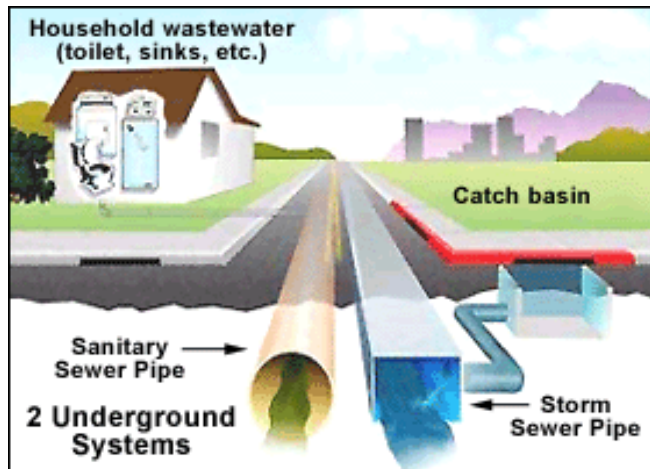
Don't flush medications.

See Maria at the recycling booth for additional, specific information!

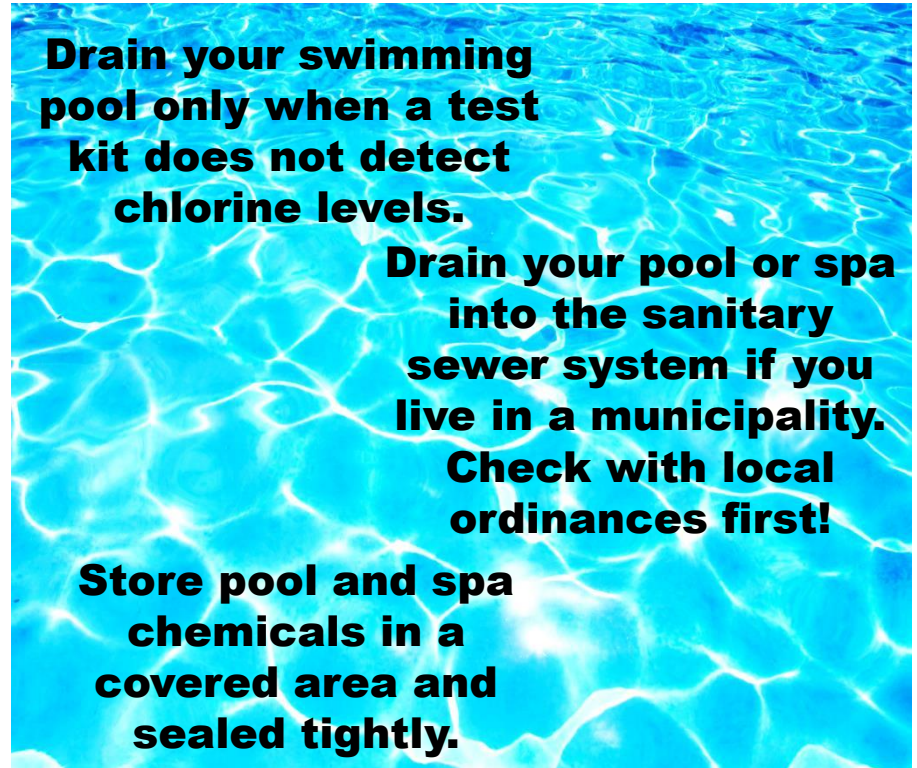
Homeowner *BMPs*

Practical Stormwater Pollution Prevention *Best Management Practices* You Can Do Around Home

Eliminate Illicit Drain Connections



Do not discharge plumbing and sanitary drains to gutters, streams, or storm drains.



Swimming Pool & Spa

Homeowner *BMPs*

Practical Stormwater Pollution Prevention *Best Management Practices* You Can Do Around Home

Home Repair & Improvement



Have your septic system inspected and pumped as necessary.

Protect the drainfield by planting only grass on and near it and by not driving or parking on it.

Flush responsibly! Refrain from flushing items likely to clog the system.

Sweep up and dispose of debris.

Do not clean paintbrushes and tools outside.

Clean up spills immediately and use the smallest amounts possible of hazardous substances.



Septic Systems & Maintenance

Homeowner *BMPs*

Practical Stormwater Pollution Prevention *Best Management Practices* You Can Do Around Home

Lawn & Garden Maintenance

Use pesticides and fertilizers sparingly.

Vegetate bare spots.

Mow high and leave clippings on the lawn.



Sweep up yard waste and recycle or compost when possible.

Don't overwater your lawn and water during cooler times of day.

Rain gardens treat stormwater and use native plants. See Chris at the rain garden booth for more information.

Lawn care providers should be certified and licensed to fertilize. A list of certified professionals can be found at www.mda.maryland.gov/fertilizer

Maryland's lawn fertilizer law went into effect on October 1, 2013. This limits when and how much fertilizer can be applied. Visit our booth for specifics!

Plants/Landscaping

Carroll County Department of Land & Resource Management



Protect Streams

NPDES Compliance Specialists: Glenn Edwards / Joanna Reznik

Homeowner *BMPs*

Practical Stormwater Pollution Prevention Best Management Practices You Can Do Around Home

Pet Care

Pick up pet waste in your yard. Waste can be flushed or thrown in the trash. Flushing is best.

Pick up pet waste while walking your pet. Some local parks supply pet waste bags for your convenience.

Never throw pet waste into a storm drain or surface water body!



Homeowner *BMPs*

Practical Stormwater Pollution Prevention *Best Management Practices* You Can Do Around Home

Questions?

Department of Land and Resource Management
Bureau of Resource Management
Carroll County, Maryland

Home/Search Business Commissioners eServices Living Here Visiting Us Government Web Notices

Find Your Watershed
Hover over the map and click on your watershed.

Upper Monocacy River
Catoctin Creek
Pottly Creek Reservoir
Double Pipe Creek
Linn Run Reservoir
Lower Monocacy River
S Branch Patuxent
Lenny Branch
Patuxent River LTB

Who We Are
Staff
Projects
Programs
Watersheds
Outreach
NPDES
Stormwater Hotline

Carroll County Government
Carroll County, Maryland

Home/Search Business Commissioners eServices Living Here Visiting Us Government Web Notices

PROTECTING CARROLL COUNTY WATERS

When it rains or when snow melts, stormwater washes away pollutants that have accumulated on lawns, driveways, roads, highways, and parking lots. These pollutants flow overland into storm drain systems and ditches emptying into local streams and rivers. When left untreated, these pollutants can impair local and downstream waterbodies used for swimming, fishing, aquatic life, and drinking water. You can help improve and protect the waters in Carroll County at home and in your municipality by learning more about stormwater pollution and prevention.

10 Things You Can Do to Help Prevent Stormwater Runoff Pollution

- Use fertilizers sparingly and sweep up driveways, sidewalks, and gutters
- Never dump anything down stormdrains, into ditches or streams
- Vegetate bare spots in your yard
- Compost your yard waste
- Use the least toxic pesticides, follow labels, and learn how to prevent pest problems
- Direct downspouts away from paved surfaces; consider a rain garden to capture runoff
- Wash your car on the lawn or take it to a car wash instead of washing it on a paved driveway
- Check your car for leaks and recycle your motor oil
- Pick up after your pet
- Have your septic tank pumped and inspected regularly

Stormwater in Carroll County and the eight incorporated municipalities is regulated by law under Phase I Municipal Separate Storm Sewer (MS4) permits under EPA's National Pollutant Discharge Elimination System program administered through the Maryland Department of the Environment.

If you are concerned about the release of pollutants or possible illegal dumping (chemicals, motor oil, paint, sewage, etc.) into a storm drain system, please contact the non-emergency Carroll County Stormwater Pollution Phone Line (410) 386-2210. Non-emergency response will occur Monday through Friday from 8 a.m. to 3 p.m.

Department of Land and Resource Management
Contact Information:
Phone: 410-386-2639
Fax: 410-386-2924
Toll Free (800) Relay: 711/800-735-2258
Click Here to Send Email

RECYCLE
Carroll County Government Department of Public Works, Carroll County, Maryland

Home/Search Business Commissioners eServices Living Here Visiting Us Government Web Notices

Recycling Information
Recycling in the Home
Multi-Family Recycling
Recycling in the School
Business Recycling
Special Events Recycling
What is Recyclable?
Smart Choices
Trash Pickup
Landfill

Come see us at our table!!! "Homeowner BMPs"

