

Zoning Map 12



Zoning Districts

Residential District

- R-40,000
- R-20,000
- R-10,000
- R-7,500

Commercial District

- C-1
- C-2
- C-3
- I-1
- I-2

Resource District

- Heritage
- Agriculture
- Conservation

Overlays

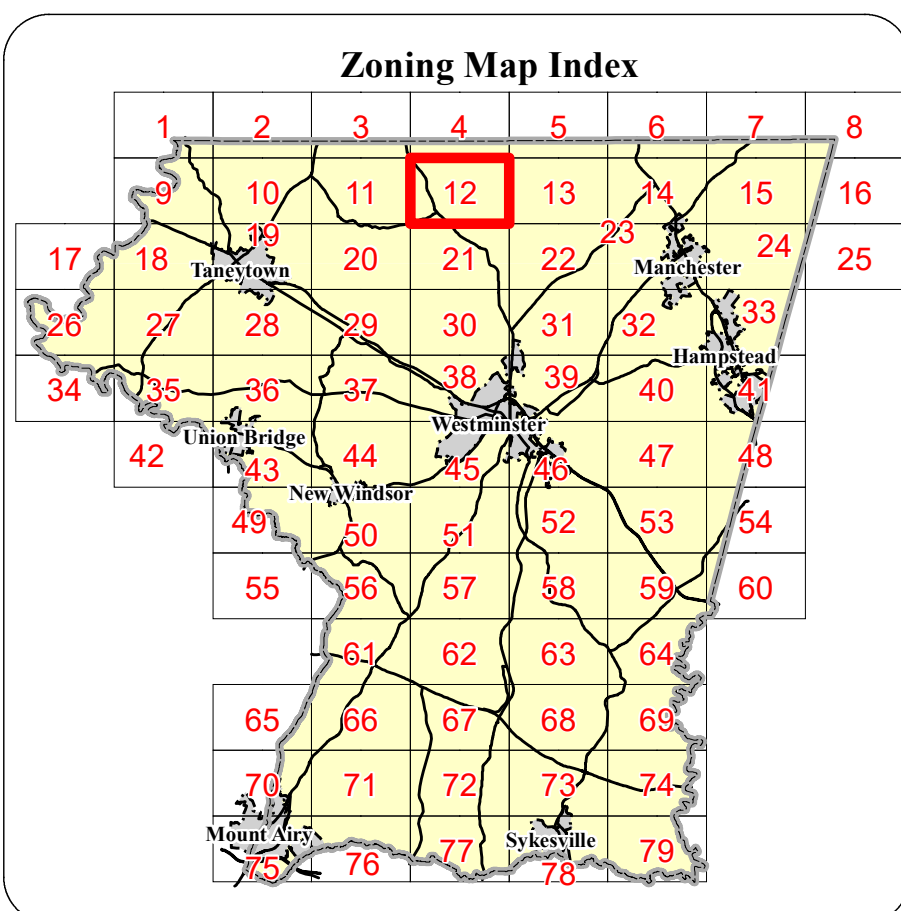
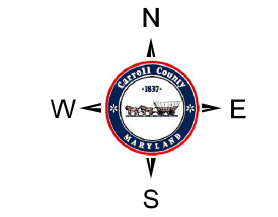
- MR (Recovery Area)
- VRA (Viable Resource Area)
- MRN (Notification Area)

Historic District Overlay

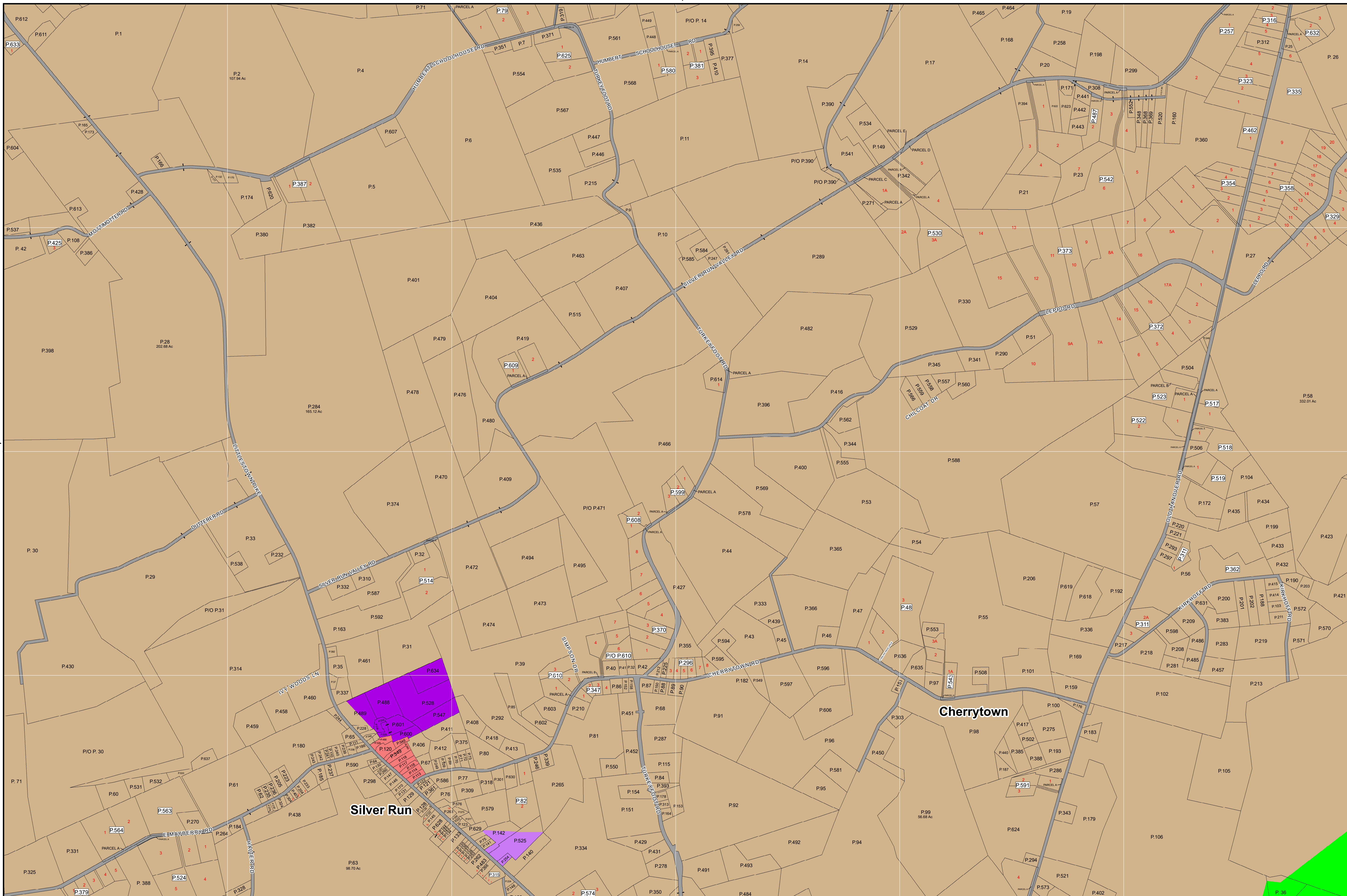
- Historic District Overlay

General

- County Border
- Corporate Limits
- Election District Boundary
- Parcel Boundary
- Railroad

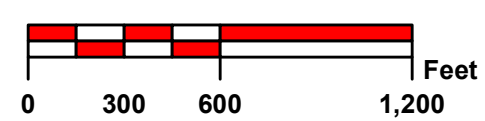


Zoning Map 12



Rev. #	MA #	Date	Description	Rev. #	MA #	Date	Description
9.				18.			
8.				17.			
7.				16.			
6.				15.			
5.				14.			
4.				13.			
3.	Ord. 19-08	12/12/2019	Comprehensive Rezoning	12.			
2.	MA 35	5/21/1969	Rezoning	11.			
1.	MA 17	11/8/1967	Rezoning Case #19	10.			

Joins Map 21
 The information contained on this map is not to be construed or used as a "legal description" and is not a survey product. While Carroll County strives to provide the best data possible, it does not provide any guaranty of accuracy or completeness regarding the map information. Where uncertainty exists in regards to the zoning districts, a determination by the Zoning Administrator may be required.
 Any errors or omissions should be reported to the Carroll County Department of Land and Resource Management GIS section.
 Mapping contact: LRM@carrollcountymd.gov or 410-386-2949
 Zoning contact: zoningadministration@carrollcountymd.gov or 410-386-2980



By Resolution of the County Commissioners of Carroll County, Maryland, a body corporate and politic of the State of Maryland
 Map signed this 12th Day of December, 2019
 Attest: *Shawn D. Reese*
 Shawn D. Reese County Clerk

Stephen A. Wantz President
Edward C. Rothstein Vice-President
 C. Richard Weaver 2nd Vice President
C. Eric Bouchat Commissioner
Dennis E. Frazier Commissioner
 COUNTY COMMISSIONERS OF CARROLL COUNTY, MARYLAND