

Zoning Map 39



Zoning Districts

Residential District

- R-40,000
- R-20,000
- R-10,000
- R-7,500

Commercial District

- C-1
- C-2
- C-3
- I-1
- I-2

Resource District

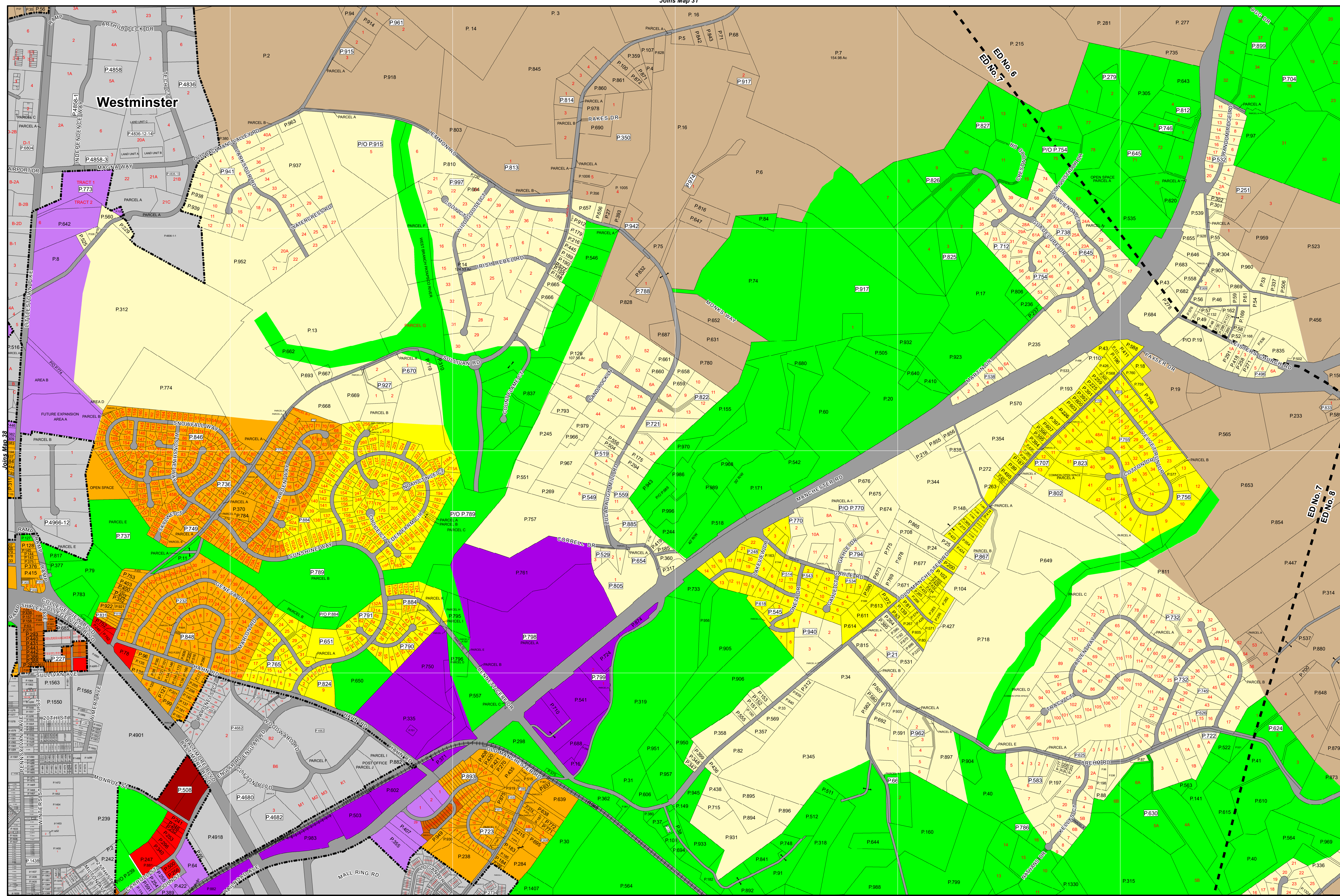
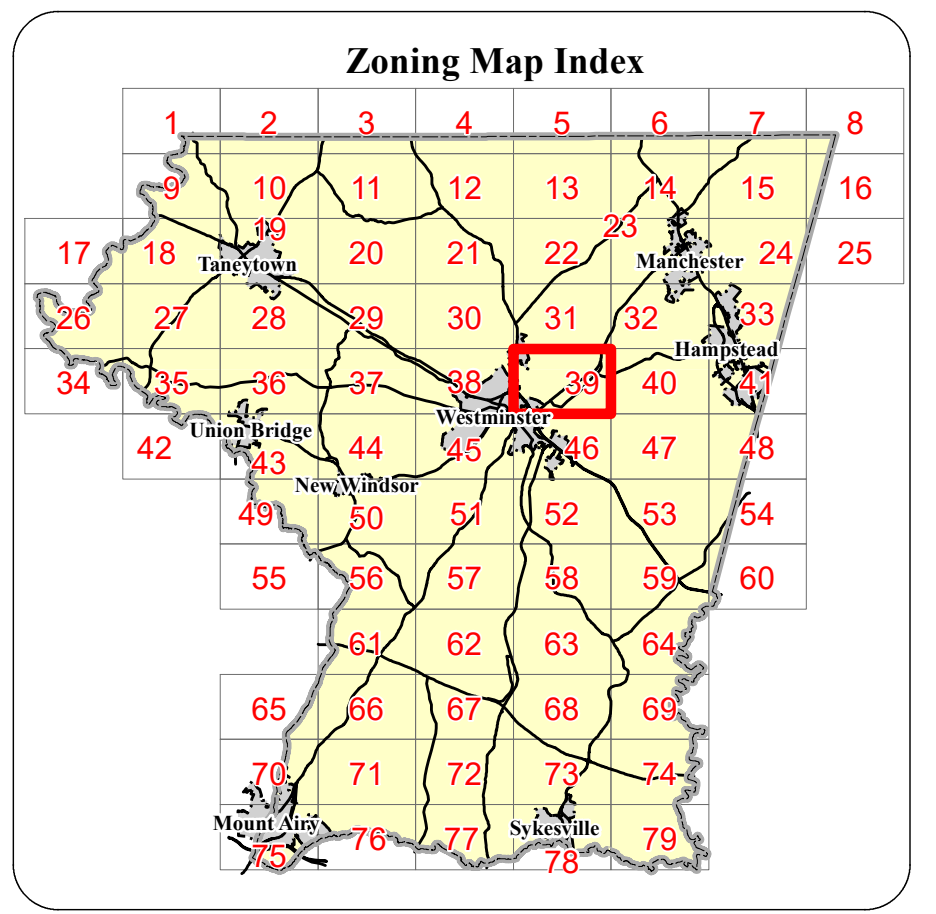
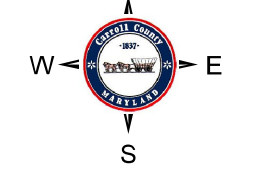
- Heritage
- Agriculture
- Conservation

Overlays

- #### Mineral Resource Overlay
- MR (Recovery Area)
 - VRA (Viable Resource Area)
 - MRN (Notification Area)
- #### Historic District Overlay
- Historic District Overlay

General

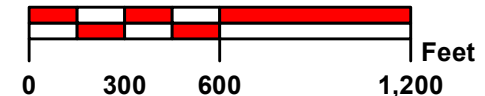
- County Border
- Corporate Limits
- Election District Boundary
- Parcel Boundary
- Railroad



Rev. #	MA #	Date	Description
9.	MA-144	9/26/1985	Annexation #19
8.	MA-139	3/12/1985	Annexation #17
7.	MA-135	9/27/1984	Annexation #16
6.	MA-101	10/21/1980	Rezoning Case #108
5.	MA-82	11/2/1978	Establishment of the Agricultural District
4.	MA-79	4/26/1978	Rezoning Case #93
3.	MA-64	6/6/1974	Rezoning Case #63
2.	MA-15	10/17/1967	Rezoning Case #15
1.	MA-10	8/15/1967	Rezoning Case #10

Rev. #	MA #	Date	Description
18.	Ord. 19-08	12/12/2019	Comprehensive Rezoning
17.	Res. 1008-2017	9/7/2017	Annexation #68 (Feeser Property)
16.	Res. 1007-2017	9/7/2017	Annexation #66 (Crowell)
15.	MA-271	5/23/2006	Annexation #56
14.	MA-261	4/1/2004	Annexation #52
13.	MA-248	5/10/2001	Annexation
12.	MA-243	3/15/2000	Rezoning Case #199
11.	MA-238	8/26/1999	Rezoning Case #200
10.	MA-148	10/31/1985	Annexation #20

The information contained on this map is not to be construed or used as a "legal description" and is not a survey product. While Carroll County strives to provide the best data possible, it does not provide any warranty of accuracy or completeness regarding the map information. Where uncertainty exists in regards to the zoning districts, a determination by the Zoning Administrator may be required. Any errors or omissions should be reported to the Carroll County Department of Land and Resource Management GIS section. Mapping contact: LRM@carrollcountymd.gov or 410-386-2949. Zoning contact: zoningadministration@carrollcountymd.gov or 410-386-2980.



By Resolution of the County Commissioners of Carroll County, Maryland, a body corporate and politic of the State of Maryland

Map signed this 12th Day of December, 2019

Attest: *Shawn D. Reese*
Shawn D. Reese County Clerk

Stephen A. Wantz President
Edward C. Rothstein Vice-President

C. Eric Bouchat Commissioner
Dennis E. Frazier Commissioner

C. Richard Weaver 2nd Vice President

COUNTY COMMISSIONERS OF CARROLL COUNTY, MARYLAND

Zoning Map 39