

THE PATAPSCO REGIONAL GREENWAY

The Patapsco Regional Greenway (PRG) Concept Plan and Implementation Matrix identifies and prioritizes a shared-use path system along the Patapsco Valley between Sykesville and the Inner Harbor of Baltimore. This 58-mile system uses existing trails, roads and utility corridors to connect neighborhoods and destinations in Baltimore City and Baltimore, Anne Arundel, Howard and Carroll Counties. A completed greenway system will improve opportunities for transportation, recreation and economic development for communities along the route.



Capitalize on the region's existing trail system

This plan identifies 58 miles of high quality shared use path facilities with 10 miles currently completed including the Waterfront Promenade, Gwynns Falls Trail, Grist Mill Trail and Freedom Park Trail. Proposed sections of the Patapsco Regional Greenway also create critical connections with the BWI Trail and B&A Trail, which extend south to Annapolis.

Coordination is key to expanding the system

The Patapsco Valley is home to many caretaker groups including the Patapsco Heritage Greenway, Friends of Patapsco Valley State Park and the Mid-Atlantic Off-Road Enthusiasts (MORE). These organizations contribute significantly to the maintenance and enhancement of existing greenway trails. Establishing a steering committee to guide the greenway's expansion will help leverage existing support and coordinate various multijurisdictional efforts. For example, engaging volunteer labor can help to build 6 miles of the recommended natural surface trails.

Plan ahead for improvements

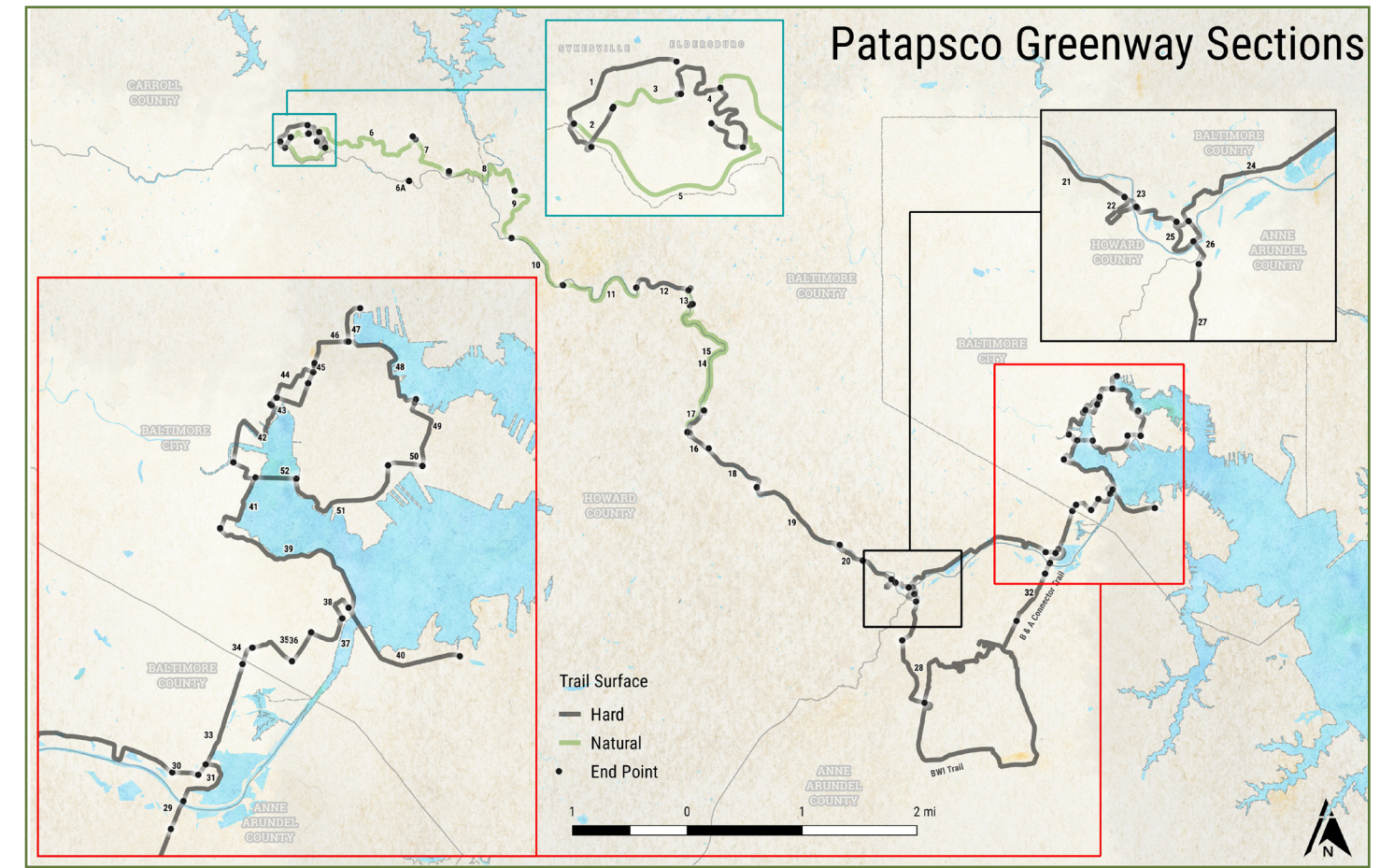
To efficiently move toward completion of the greenway, complex projects, such as the shared-use path bridge from Cherry Hill to the Patapsco Light Rail station, must be incorporated into capital improvement programs. To expedite the process, scheduling of the planning, design and construction for major greenway improvements should be coordinated between affected agencies and jurisdictions.

Establish a clear wayfinding system

With approximately 34 miles of the proposed greenway already in place along a variety of sidewalks, trails and utility corridors, the most efficient way to designate the route is to develop a sign or 'blaze' system where greenway users can follow the markers along the route. This signage should be accompanied by wayfinding that directs users to local communities and destinations along the way.

The Patapsco Regional Greenway will become a regional asset

The PRG will enhance local and national trail systems. As the project comes together the benefits of developing a connected network will be shared by each community along the route. With citizen support and agency cooperation the success of the greenway is limited only by funding and time. The recommendations in this plan are designed to layout a framework for how the project can be developed leveraging its strong support across the region.



KEY STATISTICS

COMMUNITIES SERVED

- Arbutus
- Catonsville
- Cherry Hill
- Ellicott City
- Federal Hill
- Halethorpe
- Lithicum
- Marriottsville
- Oella
- Relay
- South Baltimore
- Sykesville
- Westport
- Woodlawn
- Woodstock

GREENWAY SYSTEM

- 58 total miles
- 23 miles of sidewalk, natural surface trails, and utility corridors
- 9.8 miles of completed hard surface trails

RIGHT OF WAY

- 81% publicly owned
- 4% Baltimore Gas and Electric (BGE) owned
- 15% other private property

TRAILS CONNECTED

- B&A Trail
- BWI Trail
- Freedom Park Trail
- Grist Mill Trail
- Gwynns Falls Trail
- Jones Falls Trail
- Old Main Line Trail
- Quarry Trail
- Thru Trail
- Waterfront Promenade

BREAKDOWN OF PROJECT PHASES (BY LENGTH)

- 12.4% Existing
- 49.3% Short term
- 38.3% Long term