

Carroll County Stream Buffer Initiative Tree Planting

Tracy Eberhard

Water Resources Specialist

Bureau of Resource Management

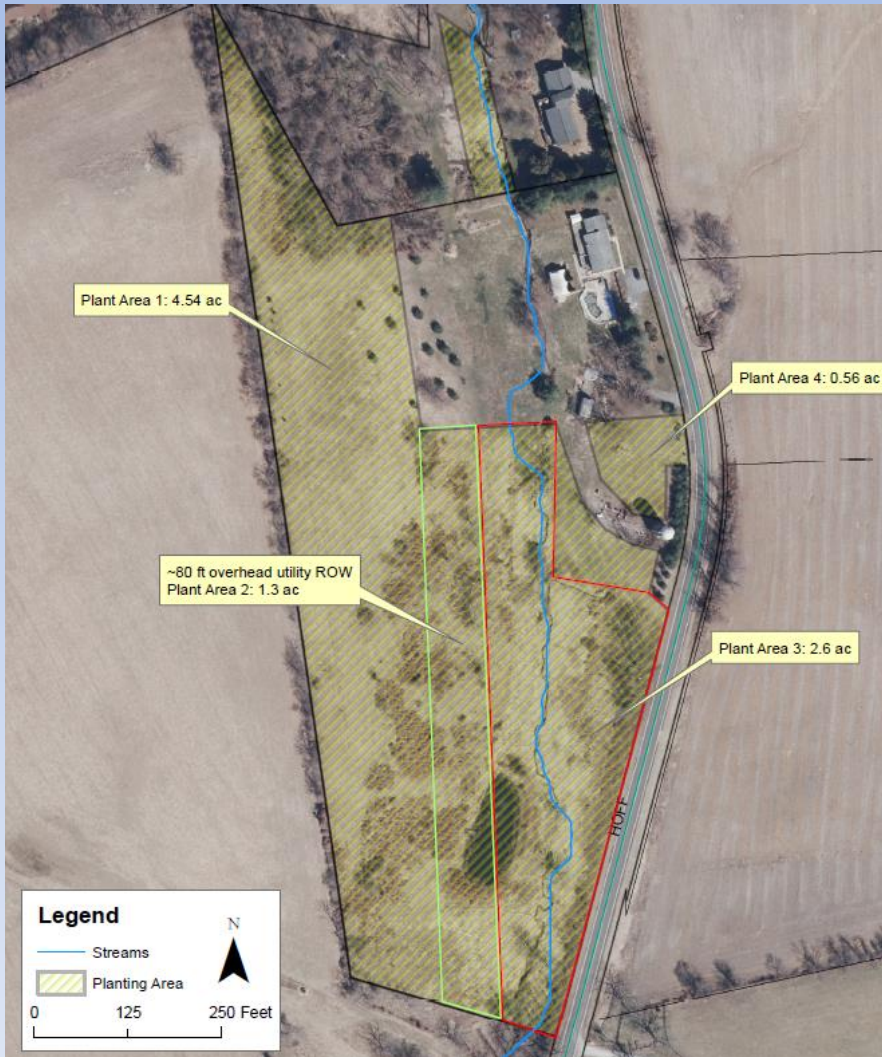
April 19, 2017

Why plant stream buffers?

- Absorb nutrients
- Capture sediment
- Manage storm water
- Stabilize stream banks
- Feed the aquatic system
- Cool stream temperature
- Improve habitat



The process of planting a stream buffer



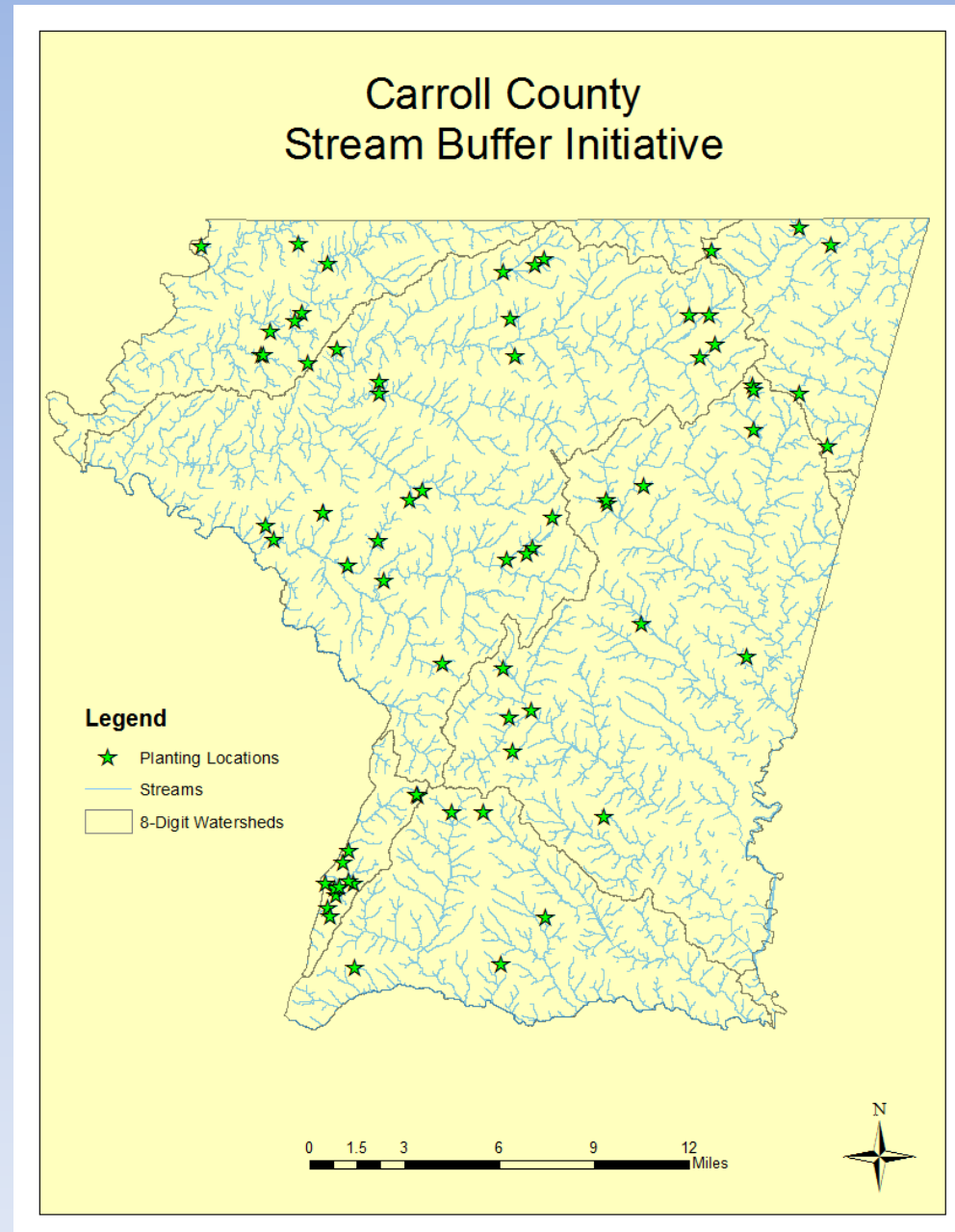
- Properties- a property is selected as planting potential (field or desktop survey)
- Landowner Involvement- potential planting areas are selected by landowner
- Evaluation- staff meet with landowners to discuss planting options
- Landowner selection- choose the stream-side areas to be planted, how much, and select native deciduous trees and shrubs they would like to be planted

The process of planting a stream buffer



- **Planning-** a planting plan is created showing planting area, number and species of trees
- **Bidding-** project is advertised to planting contractors through a competitive bid process
- **Implementation-** planting area is prepared, trees planted, shelters installed, trees mulched
- **Maintenance!!!-** mow between rows, trim or spray around base of trees, reset shelters as needed, monitor for any problems

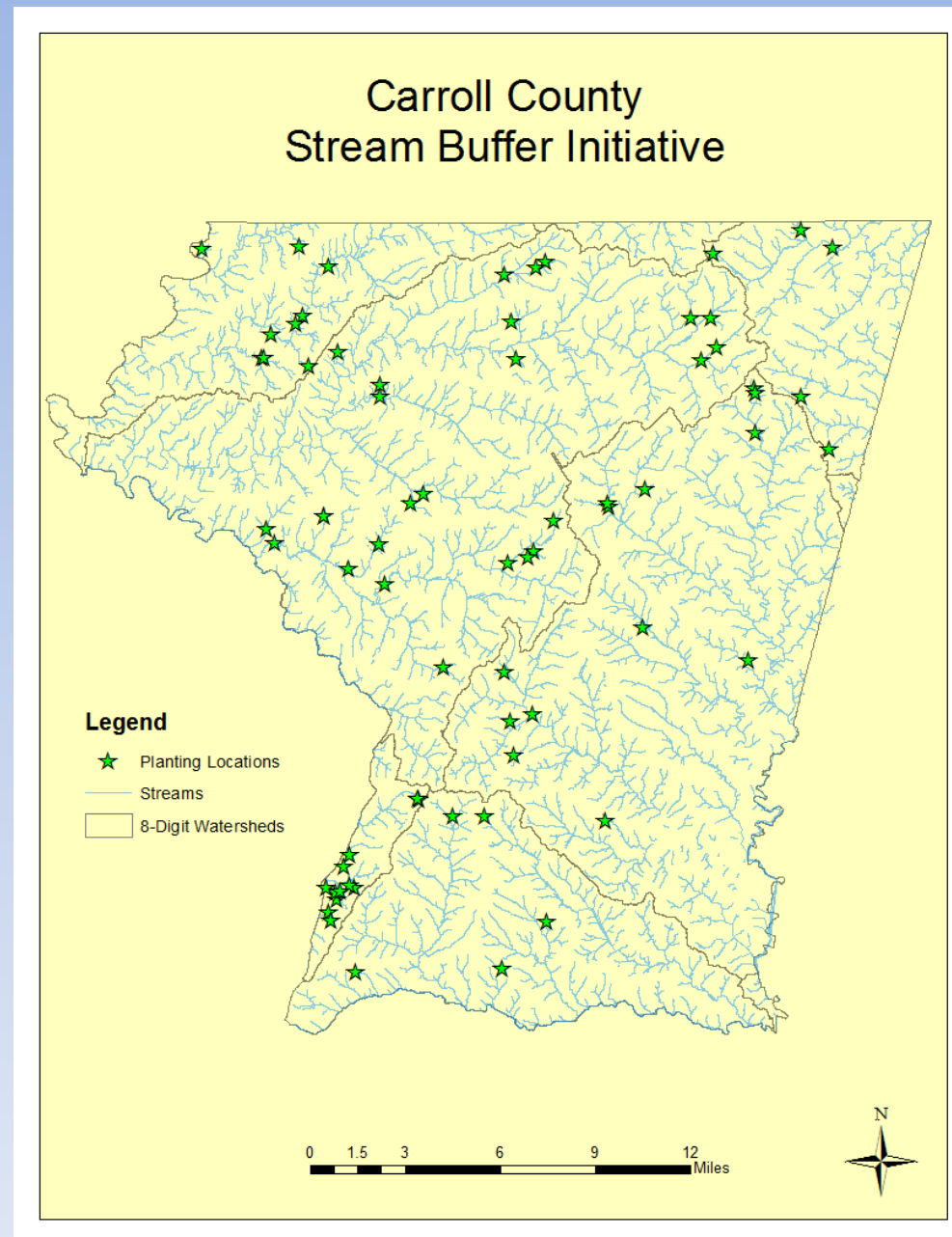
Stream Buffer Initiative



Stream Buffer Initiative

Thus far the Carroll County Bureau of Resource Management has planted **122.7 acres** in Carroll County since spring 2013 on both private landowner properties as well as municipality owned land. In total, plantings by watershed include:

51.27 acres in Double Pipe Creek
13.56 acres in Liberty
12.22 acres in Lower Monocacy
4.74 acres in Prettyboy
12.71 acres in South Branch
28.20 acres in Upper Monocacy



Stream Buffer Initiative

Grant Funding has allowed for our continued success!

- 2012 Maryland Stream Restoration Challenge : \$92,655.00
- 2013 Maryland Stream Restoration Challenge : \$206,073.00
- 2013 Maryland Stream Restoration Challenge : \$404,462.00

Dry Area Species



Pin Oak



American Sycamore



Black Walnut



River Birch



Hackberry



Red Maple



Black Willow

Wet Area Species



White Oak



Northern Red Oak



Tulip Poplar



Red Bud (Eastern)



Black Oak



Black Cherry



Black Locust