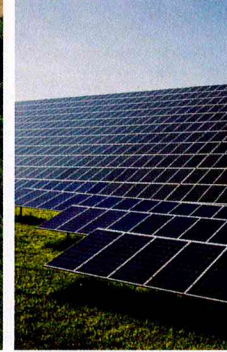




ENVIRONMENTAL FINANCE CENTER

Advancing Finance Solutions | Building Local Capacity | Serving Communities



FEATURED PROGRAMS



MOST Center

The Municipal Online Stormwater Training (MOST) Center offers free, self-paced, on-demand stormwater education and training resources for municipalities in the Chesapeake Bay watershed. Users can take interactive courses, view educational videos, explore case stories, and access helpful toolkits and manuals – all on their own timeline. By building knowledge and decision-making capacity, MOST seeks to empower communities to develop effective and affordable stormwater management programs.

www.mostcenter.org



Sustainable Maryland

Sustainable Maryland (SM) is a free, voluntary certification and outreach program for municipalities in Maryland that want to go green, save money, and take steps to sustain their quality of life over the long term. SM helps communities choose a direction for their sustainability efforts, receive training and support to implement their priority actions, guide progress, and gain recognition for their accomplishments. Today, nearly half of Maryland municipalities participate in the SM program.

www.sustainablemaryland.com

The Environmental Finance Center (EFC) at the University of Maryland advances finance solutions to environmental challenges. With more than 25 years of experience, we work with communities to protect natural resources by strengthening the capacity of decision makers to assess needs, develop effective financing methods, and catalyze action.

Through direct technical assistance, policy analysis, and research, the EFC equips communities with the knowledge and tools they need to create more sustainable environments, more resilient societies, and more robust economies.

COMMUNITY OUTREACH | FACILITATION

The EFC works directly with local government staff to engage stakeholders, build consensus and identify shared priorities. Our services include designing comprehensive outreach campaigns, facilitating focus groups, conducting community surveys, and crafting strategies to finance project implementation.

EDUCATION | TRAINING | TECHNICAL ASSISTANCE

The EFC delivers customized assistance to local governments on topics such as green infrastructure, resilience, climate and energy, and stormwater finance. Municipal staff can participate in our **Sustainable Maryland** leadership trainings and utilize the range of educational resources offered through our **Municipal Online Stormwater Training (MOST) Center**.

RESEARCH | POLICY ANALYSIS | FINANCIAL ASSESSMENT

To foster data-driven decisions, the EFC works with communities to assess programs and policies, analyze budgets, develop financing strategies, conduct energy audits, and create decision-support tools.

www.efc.umd.edu | efc@umd.edu
School of Architecture, Planning & Preservation
University of Maryland | College Park, MD 20742



HELPING COMMUNITIES INVEST TODAY FOR A MORE LIVABLE TOMORROW

Sustainable Maryland

is a free and voluntary certification program for municipalities in Maryland that want to go green, save money, and take steps to sustain their quality of life.

The mission of Sustainable Maryland is to enhance livability for all Marylanders by helping municipalities choose a direction for their sustainability efforts, improve access to resources needed to implement action, measure their progress, and gain recognition for their accomplishments.

Sustainable Maryland helps communities:

- Gain access to training, tools, funding, and expert guidance;
- Save money and improve the bottom line;
- Conserve resources while promoting community resiliency.

Sustainable Maryland features:


- Free and voluntary program that makes participation easy and accessible
- Comprehensive vision that helps communities plan across multiple priorities
- Customizable menu of concrete actions, allowing communities to select initiatives that best fit their specific needs
- Statewide recognition of certified communities' accomplishments

Getting Started


Please visit the Sustainable Maryland website, www.sustainablemaryland.com, to learn more about the program and how to begin the process of certification. The list of sustainability actions and implementation tools available for your community to consider adopting are provided and explained in detail on the website.

To initiate the certification process, municipalities need to adopt a resolution, ordinance, or proclamation or draft a formal letter stating intent to pursue Sustainable Maryland certification and then register on the website. After registration, municipalities are strongly encouraged to participate in Green Team Training. To achieve certification, municipalities will need to implement the necessary actions to qualify and submit the appropriate documents as evidence that satisfies the Sustainable Maryland requirements.


SPONSORS



THE MARYLAND MUNICIPAL LEAGUE



Town Creek Foundation



UNITED STATES ENVIRONMENTAL PROTECTION AGENCY

Actions for Sustainable Communities:

To become Sustainable Maryland Certified, municipalities must complete and document actions from the list below. To achieve certification, municipalities will need to complete actions worth a total of 150 points, including two Mandatory Actions (M) and two of six Priority Actions (P), and submit the appropriate documents as evidence that the requirements have been satisfied.

ACTION ITEM	POINTS
COMMUNITY ACTION	
Green Team	
Participate in SM Green Team Training	5
Create a Green Team	10 M
Complete a Green Team Action Plan	10 M
Conduct Community Barriers and Benefits Assessment	15
Build SM Resource Center	5
Participation in MD Green Schools	10
Innovative Demonstration Projects	5 to 20
COMMUNITY-BASED FOOD SYSTEM	
Local Food Consumption	
Local Food Fair	10
Local Food Consumption & Preservation Classes	5 per class
Establish Local Farmers Market	15
Promote Local Farmers Market	5
Local Food Production	
Community Gardens	15 P
Spring Transplant Sale	10
Fall Transplant Sale	10
Establish CSA Drop-off Location	10
Innovative Demonstration Projects	5 to 20
ENERGY	
Municipal Energy Audits	10 (1st bldg), 5 (consec bldgs) P
Residential Energy Efficiency	5 to 20+
Wind Energy Project	10
Innovative Demonstration Projects	5 to 20
GREENHOUSE GAS	
Municipal Carbon Footprint	15 P
Community Carbon Footprint	15
Climate Planning	
Climate Action Plan	10 to 25+
Climate Change Adaptation Element	5
Innovative Demonstration Projects	5 to 20
HEALTH & WELLNESS	
Let's Move	15
Workplace Wellness	
Join Healthiest Maryland Businesses	5
Workplace Wellness Program	5 to 15
Living Well Program	5 per class
Innovative Demonstration Projects	5 to 20
LOCAL ECONOMIES	
Buy Local	
Establish Local Business Directory	10
Promote Local Business Directory	5
Buy Local Campaign	15
Local Business Roundtable	5 per roundtable
Local Business Procurement Notices	10
Economic Analysis of Procurement Practices	15
Local Purchasing Preference Policy	10
Green Business Recognition	
Join Maryland Green Registry	5
Promote Maryland Green Registry	5 points per 2 businesses

Please note: Sustainable Maryland Certified actions and points may be subject to change. Printed on 55% recycled & 30% post-consumer waste paper.

ACTION ITEM	POINTS
LOCAL ECONOMIES (CONTINUED)	
Green Business Certification Program	15
Green Purchasing	
Green Purchasing Policy	15 P
Evaluate Current Purchasing Practices	10
Vendor Preference Statement	10
Purchase Recycled Products	10
Purchase Environmentally Preferable Products	10
Implement Waste Reduction Program	10
Innovative Demonstration Projects	5 to 20
NATURAL RESOURCES	
Watershed Stewardship	
Implement Watershed Stewardship/Pollution Prevention Outreach Program(s)	10
Facilitate Engagement in Existing Watershed Stewardship Opportunities	5 per event
Provide Voluntary Opportunities for Citizen Engagement in Watershed Stewardship	10
Provide Incentives for Watershed Stewardship on Private Lands	15
Create a Watershed Plan	20 P
Stormwater Management	
Stormwater Management Program	15 P
Stormwater Manager/Coordinator	15
Stormwater Fee Structure	20
Septic Management	
Septics System Assessment and Inventory	15
Septics System Management Plan	20
Dedicated Septic System Fund	20
Water Conservation	
Develop a Water Conservation Plan	15
Develop a Water Conservation Outreach Program	10
Tree City USA	15
Pet Waste	
Implement a Pet Waste Education Program	5
Develop a Pet Waste Program	5
Adopt a Pet Waste Ordinance	5
Innovative Demonstration Projects	5 to 20
PLANNING AND LAND USE	
Participation in DHCD Sustainable Communities	20
Housing and the Comprehensive Plan	10
Land Preservation	
Conduct Easement Outreach that Encourages Inspection, Evaluation, and Stewardship	15
Build Easement Inventory	10
Innovative Demonstration Projects	5 to 20

P denotes Priority Action M denotes Mandatory Action

VISIT www.sustainablemaryland.com

EMAIL info@sustainablemaryland.com

PHONE 301.405.7956

LIKE www.facebook.com/SustainableMaryland



ENVIRONMENTAL
FINANCE CENTER