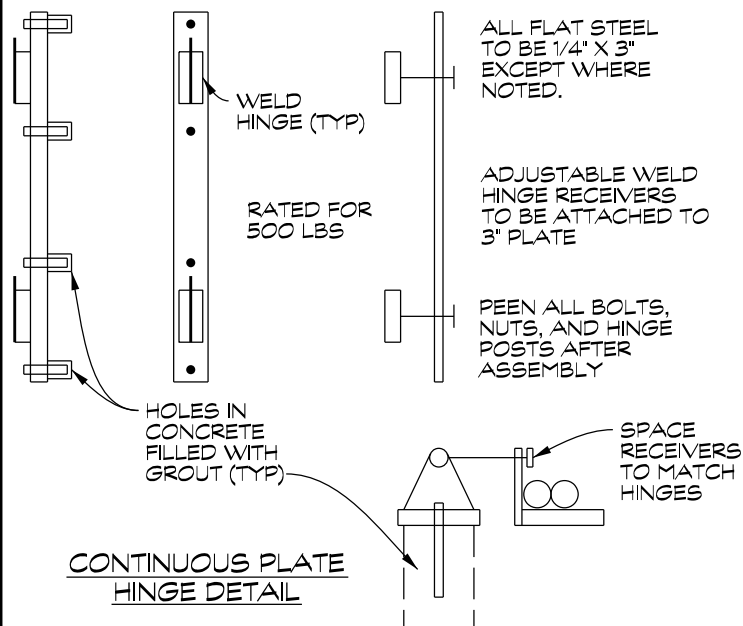


PIPE OUTFALL RACK



NOTE:

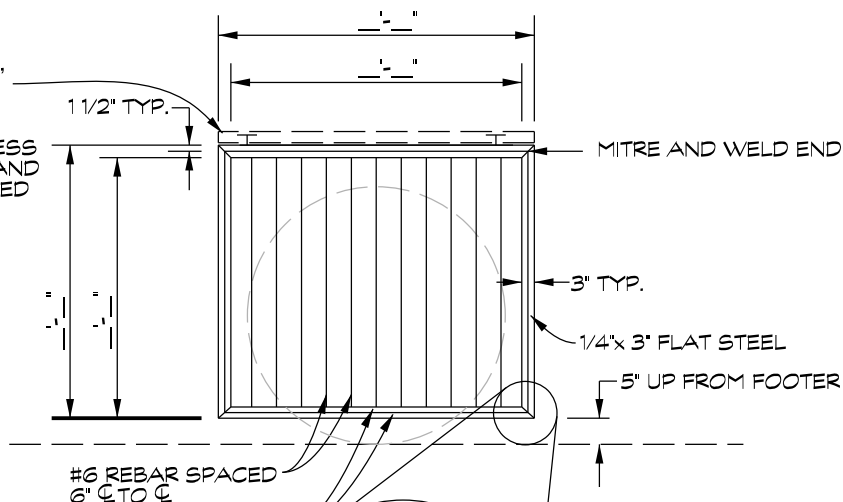
DIMENSIONS TO BE SPECIFIED ON PLAN. OVERALL DIMENSIONS SHALL BE 6" LARGER THAN PIPE OUTSIDE DIAMETER.

PIPE OUTFALL RACK TO BE HOT DIPPED GALVANIZED. NO PAINTED FIELD MODIFICATIONS.

RACK IS HELD DOWN BY WEIGHT ONLY, IT IS NOT LOCKED.

CONTINUOUS PLATE HINGE DETAIL

CONTINUOUS PLATE HINGE, SEE DETAIL THIS SHEET ANCHOR WITH MINIMUM (2) EACH. 5/8" X 6" CLASS 8 GALVANIZED OR STAINLESS STEEL BOLTS, WASHERS, AND NUTS DRILLED AND GROUTED IN ACCORDANCE WITH 430.03.31 WITH MINIMUM 3" CLEARANCE.



NOTES:

1. HINGES

- WELD TO RACK, 1/4" WELD ALL AROUND
- PLACE 6" FROM EDGE
- GALVANIZE WITH RACK

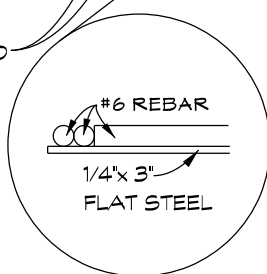
2. HASP

- WELD TO ALL REBAR CROSSINGS ALL AROUND
- PLACE AT CENTERLINE
- GALVANIZE WITH RACK

3. SHACKLE & CONTINUOUS PLATE HINGE

- 1/4" WELDS ALL AROUND
- GALVANIZE WITH RACK

(2) #6 REBAR BUTTED TOGETHER TO ADD STRENGTH



SIDE VIEW OF FRAME

Martin B. Covington III, PE
SWM Program Engineer
DISTRIBUTED FOR COMMENT MAY 3, 2010
COMMENTS RECIEVED AT C.C.
SURVEYORS MEETING MAY 19, 2010
EFFECTIVE DATE: JULY 29, 2010
REVISED TO SPECIFY MOUNTING
HARDWARE AND DISTRIBUTED
FOR COMMENT AT C.C. SURVEYORS
MEETING NOV. 19, 2014
REVISED TO INCORPORATE COMMENTS
AND CLARIFY WHEN USED. DISTRIBUTED
FOR COMMENT MARCH 18, 2015.
EFFECTIVE DATE: MAY 20, 2015
REVISED TO PLACE HINGES AT TOP
OF FRAME.
REVISED 26 MARCH 2025

USE AS DIRECTED BY CARROLL COUNTY

TO BE INSTALLED ON POND INFLOWS WHEN:

- PIPE IS GREATER THAN 36" DIA.
- THERE ARE STILLING POOLS IN THE STORM DRAIN SYSTEM.
- THE STORM DRAIN SYSTEM IS INLET FED (NO OPEN PIPES)