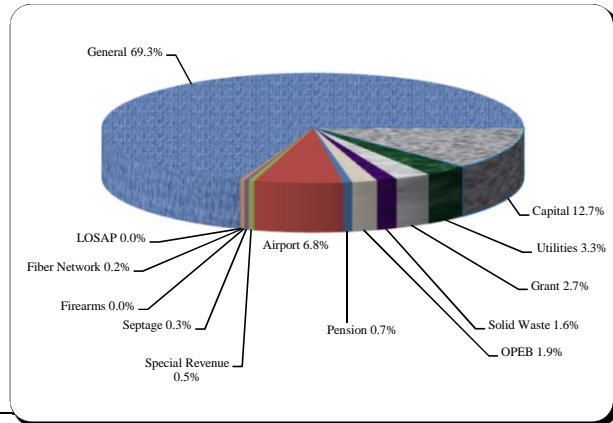


# Financial and Demographic Data

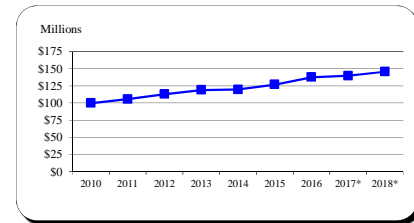
## FY 18 Budget By Fund

Fund Type	FY 18	% of Total
General	\$400,042,050	69.3%
Capital	73,291,435	12.7%
Utilities	19,255,551	3.3%
Grant	15,775,507	2.7%
Solid Waste	8,948,500	1.6%
OPEB	11,050,000	1.9%
Pension	3,864,700	0.7%
Airport	38,970,070	6.8%
Special Revenue	2,651,480	0.5%
Septage	1,732,075	0.3%
Firearms	155,500	0.0%
Fiber Network	1,417,700	0.2%
LOSAP	166,000	0.0%
<b>Total</b>	<b>\$577,320,568</b>	<b>100.0%</b>



## Income Tax Collected-Operating

Year	Taxes Collected	% Change
2010	99,652,702	-4.3%
2011	105,610,792	6.0%
2012	112,881,085	6.9%
2013	118,759,789	5.2%
2014	119,575,545	0.7%
2015	126,688,154	5.9%
2016	137,512,883	8.5%
2017*	139,692,655	1.6%
2018*	145,624,240	4.2%

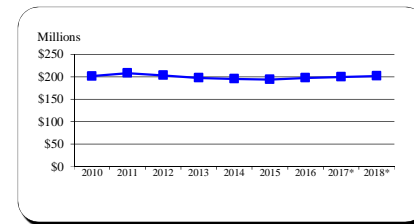


Tax rate is currently 3.03%. The Board of County Commissioners lowered the rate of 3.04% to 3.03% effective January 1, 2015.

Typically, 9.09% of income tax revenue is directly appropriated to the CIP for school construction. For FY 17, the Commissioners temporarily reduced this amount to 7.09% with 2.0% going to Operating. For FY 18, the Commissioners temporarily reduced this amount to 7.59% with 1.5% going to Operating. Source: FY 16 Carroll County CAFR, Schedule 1-1

## Total Local Property Tax Collected

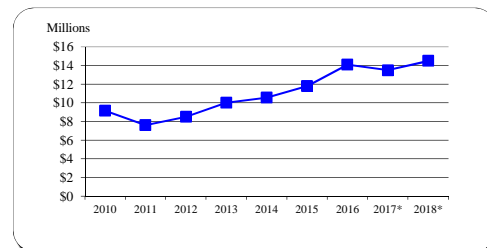
Year	Taxes Collected	% Change
2010	201,526,399	6.6%
2011	208,296,512	3.4%
2012	203,601,066	-2.3%
2013	197,727,477	-2.9%
2014	195,528,915	-1.1%
2015	194,029,688	-0.8%
2016	197,552,925	1.8%
2017*	199,647,417	1.1%
2018*	201,863,310	1.1%



The tax rate decreased from \$1.048 to \$1.028 for Real Property and from \$2.62 to \$2.57 for Personal Property in FY 12. The tax rate decreased to \$1.018 for Real Property and \$2.545 for Personal Property in FY 13. In FY 14, the Personal Property tax rate decreased to \$2.515. Source: FY 16 Carroll County CAFR, Table 4

## Recordation Tax Collected

Year	Base	% Change
2010	9,154,578	-0.7%
2011	7,612,907	-16.8%
2012	8,520,674	11.9%
2013	10,021,395	17.6%
2014	10,576,850	5.5%
2015	11,800,000	11.6%
2016	14,093,918	19.4%
2017*	13,500,000	-4.2%
2018*	14,500,000	7.4%



Source: FY 16 Carroll County CAFR, Table 4

\* Indicates budgeted amount

# Financial and Demographic Data

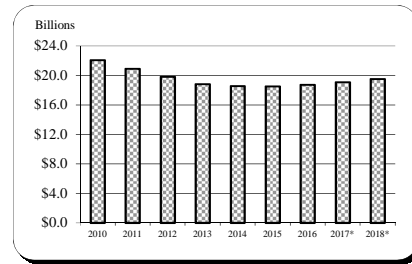
## Assessable Base-Real and Personal Property

Year	Base	% Change
2010	22,077,626,050	8.1%
2011	20,907,114,686	-5.3%
2012	19,829,611,572	-5.2%
2013	18,808,823,173	-5.1%
2014	18,549,381,425	-1.4%
2015	18,495,548,665	-0.3%
2016	18,733,020,866	1.3%
2017*	19,057,853,000	1.7%
2018*	19,493,125,000	2.3%

All years are expressed at 100% of assessed value.

Sources: FY 10 - FY 16 Carroll County CAFR, Table 6

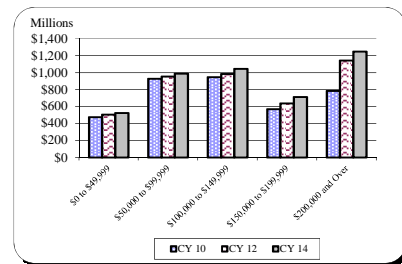
FY 17 - FY 18 Maryland State Department of Assessment and Taxation November 2016 Update



## Net Taxable Income

Income Range	CY 10	CY 12	CY 14
\$0 to \$49,999	\$473,736,286	\$504,668,381	\$522,162,169
\$50,000 to \$99,999	927,656,349	952,519,093	985,787,690
\$100,000 to \$149,999	945,627,851	983,536,421	1,042,452,581
\$150,000 to \$199,999	568,031,839	635,495,497	712,442,833
\$200,000 and Over	784,653,290	1,142,444,172	1,247,358,619

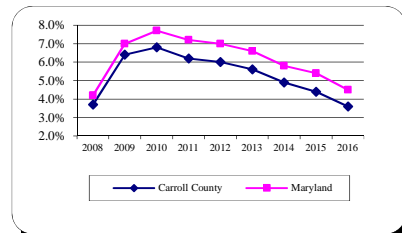
Source: Comptroller of Maryland Income Tax Summary Reports 2010-2014



## Average Annual Unemployment Rates

Year	Carroll County	Maryland
2008	3.7%	4.2%
2009	6.4%	7.0%
2010	6.8%	7.7%
2011	6.2%	7.2%
2012	6.0%	7.0%
2013	5.6%	6.6%
2014	4.9%	5.8%
2015	4.4%	5.4%
2016	3.6%	4.5%

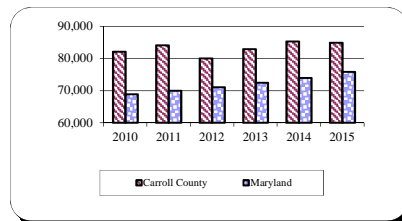
Source: MD Department of Labor, Licensing and Regulation



## Median Household Income

Year	Carroll County	Maryland
2010	82,077	68,854
2011	84,117	70,004
2012	80,028	71,122
2013	82,955	72,483
2014	85,274	73,971
2015	84,887	75,847

Source: U.S. Census Bureau, American Community Survey



\* Indicates budgeted amount

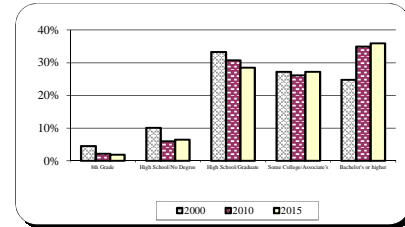
# Financial and Demographic Data

## Educational Attainment

	2000	2010	2015
Population 25+ years			
8th Grade	4.6%	2.2%	1.9%
High School/No Degree	10.1%	6.0%	6.5%
High School/Graduate	33.3%	30.8%	28.5%
Some College/Associate's	27.2%	26.1%	27.2%
Bachelor's or higher	24.8%	34.9%	36.0%

Sources: US Census Bureau - 2000, 2010 Census

US Census Bureau - 2016 American Community Survey



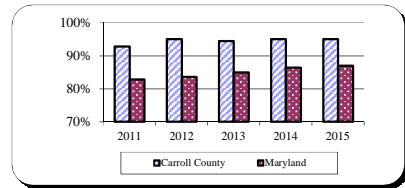
## Graduation Rates

Year	Carroll County	Maryland
2011	92.8%	82.8%
2012	95.0%	83.6%
2013	94.4%	85.0%
2014	95.0%	86.4%
2015	95.0%	87.0%

Source: 2016 Maryland Report Card

Note: The percentages represent the 4 Year Adjusted Cohort Rate.

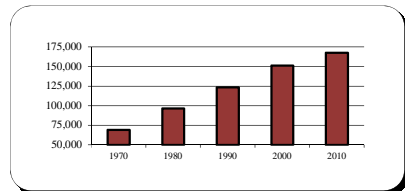
95% in a category indicates > 95 and corresponding counts have been suppressed.



## Population

Year	Carroll County
April 1, 1970 Census	69,006
April 1, 1980 Census	96,356
April 1, 1990 Census	123,372
April 1, 2000 Census	150,897
April 1, 2010 Census	167,134

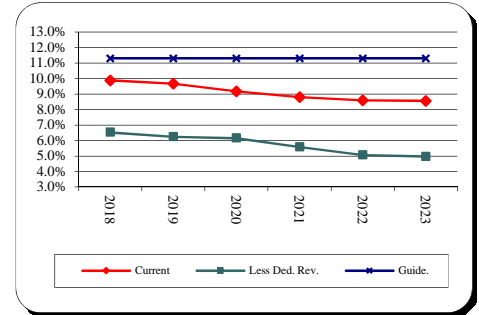
Source: US Census



# Financial and Demographic Data

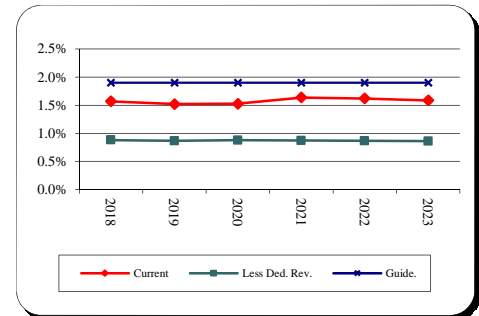
## General Fund Debt Service/General Fund Revenue

<u>Fiscal Year</u>	<u>Current Position</u>	<u>Revenue and Supported D/S</u>	<u>County Guideline</u>
2018	9.9%	6.5%	11.3%
2019	9.7%	6.2%	11.3%
2020	9.2%	6.2%	11.3%
2021	8.8%	5.6%	11.3%
2022	8.6%	5.0%	11.3%
2023	8.5%	5.0%	11.3%



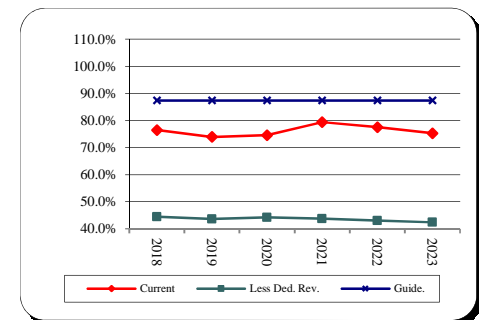
## General Fund Debt/Assessable Base

<u>Fiscal Year</u>	<u>Current Position</u>	<u>Revenue and Supported Debt</u>	<u>County Guideline</u>
2018	1.57%	0.88%	1.90%
2019	1.52%	0.87%	1.90%
2020	1.53%	0.88%	1.90%
2021	1.64%	0.87%	1.90%
2022	1.62%	0.86%	1.90%
2023	1.59%	0.86%	1.90%



## General Fund Debt/General Fund Revenue

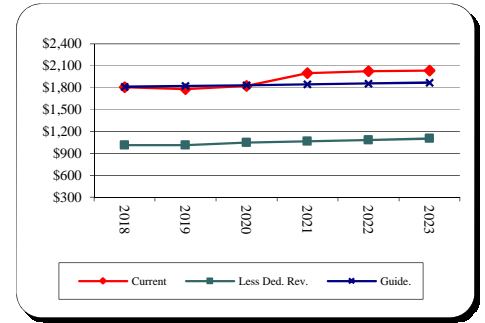
<u>Fiscal Year</u>	<u>Current Position</u>	<u>Revenue and Supported Debt</u>	<u>County Guideline</u>
2018	76.5%	44.5%	87.4%
2019	73.9%	43.6%	87.4%
2020	74.6%	44.3%	87.4%
2021	79.4%	43.8%	87.4%
2022	77.6%	43.0%	87.4%
2023	75.3%	42.5%	87.4%



# Financial and Demographic Data

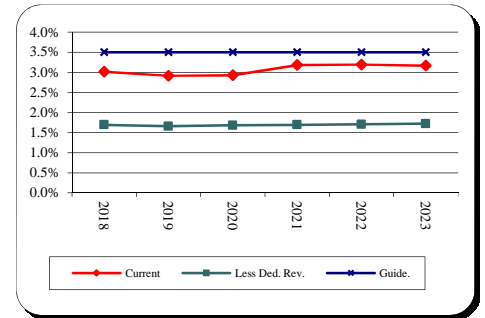
## General Fund Debt/Capita

<u>Fiscal Year</u>	<u>Current Position</u>	<u>Revenue and Supported Debt</u>	<u>County Guideline</u>
2018	1,807	1,014	1,811
2019	1,780	1,012	1,822
2020	1,823	1,047	1,834
2021	2,000	1,064	1,845
2022	2,027	1,082	1,856
2023	2,033	1,103	1,868



## General Fund Debt/Personal Income

<u>Fiscal Year</u>	<u>Current Position</u>	<u>Revenue and Supported Debt</u>	<u>County Guideline</u>
2018	3.0%	1.7%	3.5%
2019	2.9%	1.7%	3.5%
2020	2.9%	1.7%	3.5%
2021	3.2%	1.7%	3.5%
2022	3.2%	1.7%	3.5%
2023	3.2%	1.7%	3.5%



## Total Debt Service/General Fund Revenue

<u>Fiscal Year</u>	<u>Current Position</u>	<u>Less Ded. Rev. Revenue and Supported DS</u>	<u>County Guideline</u>
2018	10.7%	6.5%	12.0%
2019	10.5%	6.2%	12.0%
2020	10.0%	6.2%	12.0%
2021	9.6%	5.6%	12.0%
2022	9.4%	5.0%	12.0%
2023	9.4%	5.0%	12.0%

