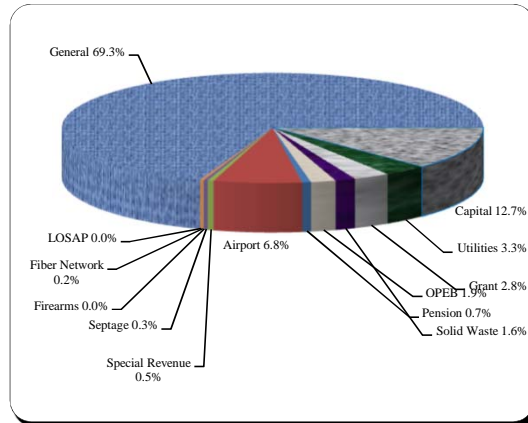


Financial and Demographic Data

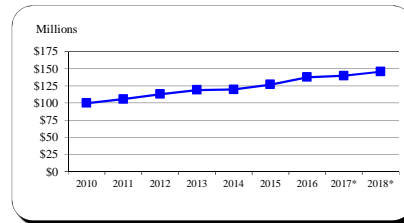
FY 18 Budget By Fund

Fund Type	FY 18	% of Total
General	\$399,771,040	69.3%
Capital	73,083,433	12.7%
Utilities	19,255,551	3.3%
Grant	16,075,517	2.8%
Solid Waste	8,948,500	1.6%
OPEB	11,050,000	1.9%
Pension	3,864,700	0.7%
Airport	38,970,070	6.8%
Special Revenue	2,651,480	0.5%
Septage	1,732,075	0.3%
Firearms	155,500	0.0%
Fiber Network	1,417,700	0.2%
LOSAP	100,000	0.0%
Total	\$577,075,566	100.0%



Income Tax Collected-Operating

Year	Taxes Collected	% Change
2010	99,652,702	-4.3%
2011	105,610,792	6.0%
2012	112,881,085	6.9%
2013	118,759,789	5.2%
2014	119,575,545	0.7%
2015	126,688,154	5.9%
2016	137,512,883	8.5%
2017*	139,692,655	1.6%
2018*	145,624,240	4.2%

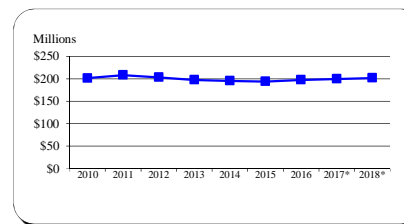


Tax rate is currently 3.03%. The Board of County Commissioners lowered the rate of 3.04% to 3.03% effective January 1, 2015.

Typically, 9.09% of income tax revenue is directly appropriated to the CIP for school construction. For FY 17, the Commissioners temporarily reduced this amount to 7.09% with 2.0% going to Operating. For FY 18, the Commissioners temporarily reduced this amount to 7.59% with 1.5% going to Operating. Source: FY 16 Carroll County CAFR, Schedule 1-1

Total Local Property Tax Collected

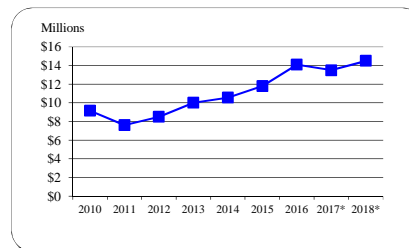
Year	Taxes Collected	% Change
2010	201,526,399	6.6%
2011	208,296,512	3.4%
2012	203,601,066	-2.3%
2013	197,727,477	-2.9%
2014	195,528,915	-1.1%
2015	194,029,688	-0.8%
2016	197,552,925	1.8%
2017*	199,647,417	1.1%
2018*	201,879,100	1.1%



The tax rate decreased from \$1.048 to \$1.028 for Real Property and from \$2.62 to \$2.57 for Personal Property in FY 12. The tax rate decreased to \$1.018 for Real Property and \$2.545 for Personal Property in FY 13. In FY 14, the Personal Property tax rate decreased to \$2.515. Source: FY 16 Carroll County CAFR, Table 4

Recordation Tax Collected

Year	Base	% Change
2010	9,154,578	-0.7%
2011	7,612,907	-16.8%
2012	8,520,674	11.9%
2013	10,021,395	17.6%
2014	10,576,850	5.5%
2015	11,800,000	11.6%
2016	14,093,918	19.4%
2017*	13,500,000	-4.2%
2018*	14,500,000	7.4%



Source: FY 16 Carroll County CAFR, Table 4

* Indicates budgeted amount

Financial and Demographic Data

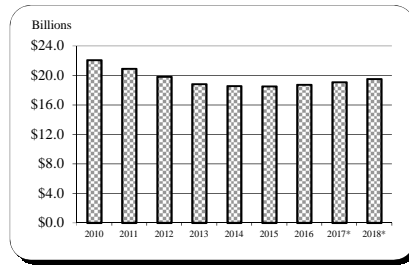
Assessable Base-Real and Personal Property

Year	Base	% Change
2010	22,077,626,050	8.1%
2011	20,907,114,686	-5.3%
2012	19,829,611,572	-5.2%
2013	18,808,823,173	-5.1%
2014	18,549,381,425	-1.4%
2015	18,495,548,665	-0.3%
2016	18,733,020,866	1.3%
2017*	19,057,853,000	1.7%
2018*	19,493,125,000	2.3%

All years are expressed at 100% of assessed value.

Sources: FY 10 - FY 16 Carroll County CAFR, Table 6

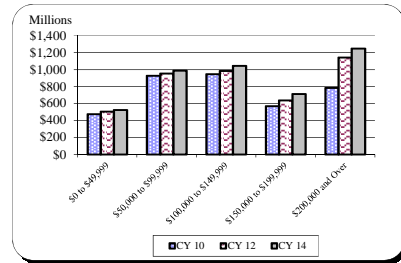
FY 17 - FY 18 Maryland State Department of Assessment and Taxation November 2016 Update



Net Taxable Income

Income Range	CY 10	CY 12	CY 14
\$0 to \$49,999	\$473,736,286	\$504,668,381	\$522,162,169
\$50,000 to \$99,999	927,656,349	952,519,093	985,787,690
\$100,000 to \$149,999	945,627,851	983,536,421	1,042,452,581
\$150,000 to \$199,999	568,031,839	635,495,497	712,442,833
\$200,000 and Over	784,653,290	1,142,444,172	1,247,358,619

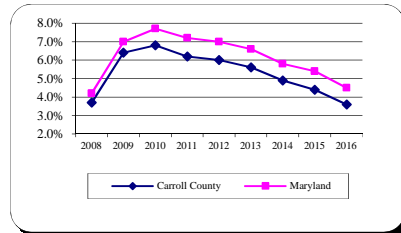
Source: Comptroller of Maryland Income Tax Summary Reports 2010-2014



Average Annual Unemployment Rates

Year	Carroll County	Maryland
2008	3.7%	4.2%
2009	6.4%	7.0%
2010	6.8%	7.7%
2011	6.2%	7.2%
2012	6.0%	7.0%
2013	5.6%	6.6%
2014	4.9%	5.8%
2015	4.4%	5.4%
2016	3.6%	4.5%

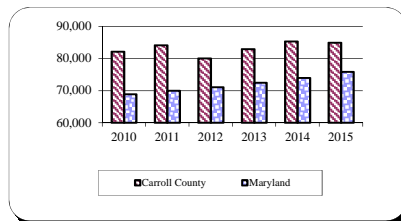
Source: MD Department of Labor, Licensing and Regulation



Median Household Income

Year	Carroll County	Maryland
2010	82,077	68,854
2011	84,117	70,004
2012	80,028	71,122
2013	82,955	72,483
2014	85,274	73,971
2015	84,887	75,847

Source: U.S. Census Bureau, American Community Survey



* Indicates budgeted amount

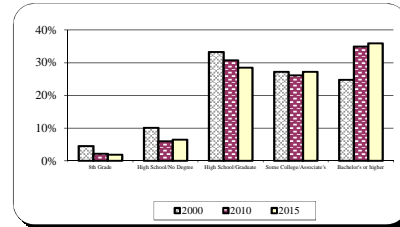
Financial and Demographic Data

Educational Attainment

	2000	2010	2015
Population 25+ years			
8th Grade	4.6%	2.2%	1.9%
High School/No Degree	10.1%	6.0%	6.5%
High School/Graduate	33.3%	30.8%	28.5%
Some College/Associate's	27.2%	26.1%	27.2%
Bachelor's or higher	24.8%	34.9%	36.0%

Sources: US Census Bureau - 2000, 2010 Census

US Census Bureau - 2016 American Community Survey



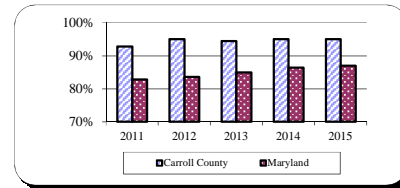
Graduation Rates

Year	Carroll County	Maryland
2011	92.8%	82.8%
2012	95.0%	83.6%
2013	94.4%	85.0%
2014	95.0%	86.4%
2015	95.0%	87.0%

Source: 2016 Maryland Report Card

Note: The percentages represent the 4 Year Adjusted Cohort Rate.

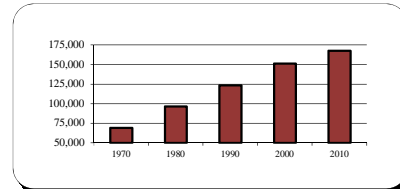
95% in a category indicates > 95 and corresponding counts have been suppressed.



Population

Year	Carroll County
April 1, 1970 Census	69,006
April 1, 1980 Census	96,356
April 1, 1990 Census	123,372
April 1, 2000 Census	150,897
April 1, 2010 Census	167,134

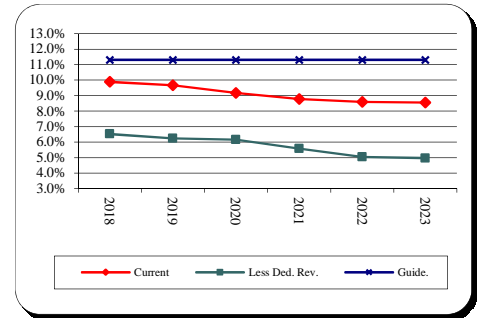
Source: US Census



Financial and Demographic Data

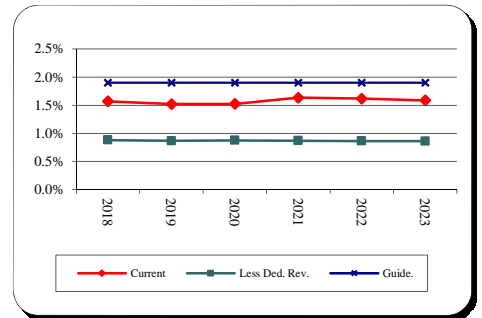
General Fund Debt Service/General Fund Revenue

<u>Fiscal Year</u>	<u>Current Position</u>	<u>Revenue and Supported D/S</u>	<u>County Guideline</u>
2018	9.9%	6.5%	11.3%
2019	9.7%	6.2%	11.3%
2020	9.2%	6.1%	11.3%
2021	8.8%	5.6%	11.3%
2022	8.6%	5.0%	11.3%
2023	8.5%	5.0%	11.3%



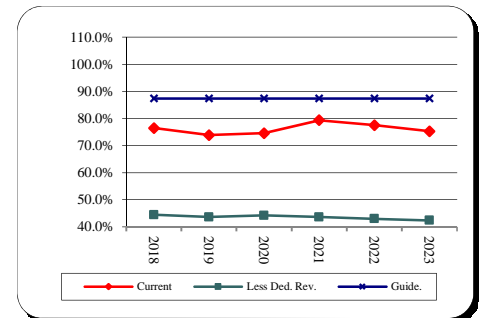
General Fund Debt/Assessable Base

<u>Fiscal Year</u>	<u>Current Position</u>	<u>Revenue and Supported Debt</u>	<u>County Guideline</u>
2018	1.57%	0.88%	1.90%
2019	1.52%	0.87%	1.90%
2020	1.52%	0.88%	1.90%
2021	1.64%	0.87%	1.90%
2022	1.62%	0.86%	1.90%
2023	1.58%	0.86%	1.90%



General Fund Debt/General Fund Revenue

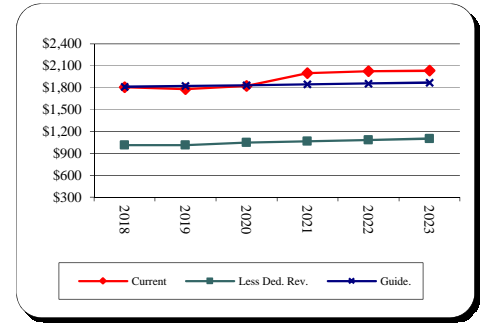
<u>Fiscal Year</u>	<u>Current Position</u>	<u>Revenue and Supported Debt</u>	<u>County Guideline</u>
2018	76.5%	44.5%	87.4%
2019	73.9%	43.6%	87.4%
2020	74.6%	44.2%	87.4%
2021	79.4%	43.7%	87.4%
2022	77.5%	43.0%	87.4%
2023	75.3%	42.4%	87.4%



Financial and Demographic Data

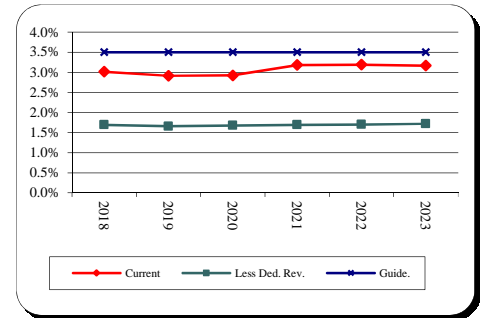
General Fund Debt/Capita

<u>Fiscal Year</u>	<u>Current Position</u>	<u>Revenue and Supported Debt</u>	<u>County Guideline</u>
2018	1,807	1,014	1,811
2019	1,779	1,012	1,822
2020	1,822	1,045	1,834
2021	1,999	1,063	1,845
2022	2,025	1,081	1,856
2023	2,032	1,102	1,868



General Fund Debt/Personal Income

<u>Fiscal Year</u>	<u>Current Position</u>	<u>Revenue and Supported Debt</u>	<u>County Guideline</u>
2018	3.0%	1.7%	3.5%
2019	2.9%	1.7%	3.5%
2020	2.9%	1.7%	3.5%
2021	3.2%	1.7%	3.5%
2022	3.2%	1.7%	3.5%
2023	3.2%	1.7%	3.5%



Total Debt Service/General Fund Revenue

<u>Fiscal Year</u>	<u>Current Position</u>	<u>Less Ded. Rev. Revenue and Supported DS</u>	<u>County Guideline</u>
2018	10.7%	6.5%	12.0%
2019	10.5%	6.2%	12.0%
2020	10.0%	6.1%	12.0%
2021	9.6%	5.6%	12.0%
2022	9.4%	5.0%	12.0%
2023	9.4%	5.0%	12.0%

