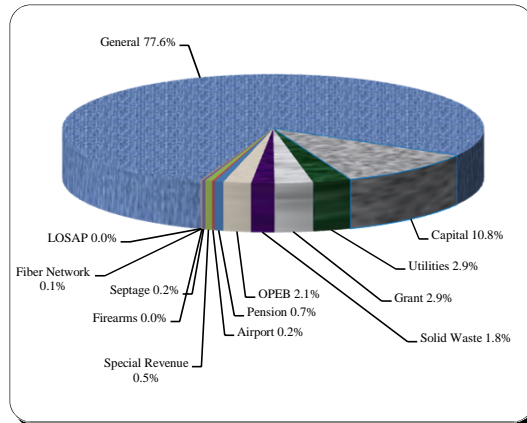


# Financial and Demographic Data

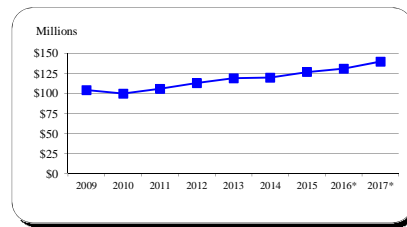
## FY 17 Budget By Fund

Fund Type	FY 17	% of Total
General	\$388,407,000	77.6%
Capital	54,254,624	10.8%
Utilities	14,660,685	2.9%
Grant	14,654,830	2.9%
Solid Waste	8,815,806	1.8%
OPEB	10,578,580	2.1%
Pension	3,434,760	0.7%
Airport	954,220	0.2%
Special Revenue	2,666,620	0.5%
Septage	1,173,300	0.2%
Firearms	155,500	0.0%
Fiber Network	401,000	0.1%
LOSAP	100,000	0.0%
<b>Total</b>	<b>\$500,256,925</b>	



## Income Tax Collected-Operating

Year	Taxes Collected	% Change
2009	104,146,179	-4.3%
2010	99,652,702	-4.3%
2011	105,610,792	6.0%
2012	112,881,085	6.9%
2013	118,759,789	5.2%
2014	119,575,545	0.7%
2015	126,688,154	5.9%
2016*	130,842,350	3.3%
2017*	139,692,655	6.8%

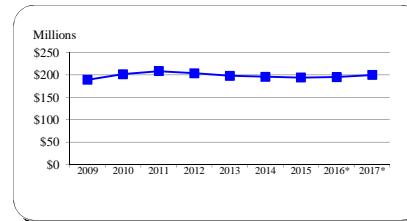


Tax rate is currently 3.03%. The Board of County Commissioners lowered the current rate of 3.04% to 3.03% effective January 1, 2015.

Typically, 9.09% of income tax revenue is directly appropriated to the CIP for school construction. In FY 16, the Commissioners temporarily reduced this amount to 7.09% with 2.0% going to Operating. Source: FY 15 Carroll County CAFR, Schedule 1-1

## Total Local Property Tax Collected

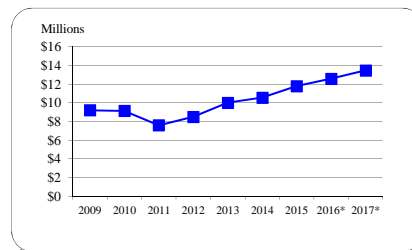
Year	Taxes Collected	% Change
2009	189,079,529	8.4%
2010	201,526,399	6.6%
2011	208,296,512	3.4%
2012	203,601,066	-2.3%
2013	197,727,477	-2.9%
2014	195,528,915	-1.1%
2015	194,029,688	-0.8%
2016*	195,068,480	0.5%
2017*	199,647,417	2.3%



The tax rate decreased from \$1.048 to \$1.028 for Real Property and from \$2.62 to \$2.57 for Personal Property in FY 12. The tax rate decreased to \$1.018 for Real Property and \$2.545 for Personal Property in FY 13. In FY 14, the Personal Property tax rate decreased to \$2.515. Source: FY 15 Carroll County CAFR, Table 4

## Recordation Tax Collected

Year	Base	% Change
2009	9,220,249	-38.3%
2010	9,154,578	-0.7%
2011	7,612,907	-16.8%
2012	8,520,674	11.9%
2013	10,021,395	17.6%
2014	10,576,850	5.5%
2015	11,800,000	11.6%
2016*	12,600,000	6.8%
2017*	13,500,000	7.1%



Beginning in FY 04, tax rate increased from \$3.50 per \$500 to \$5.00 per \$500.

Source: FY 15 Carroll County CAFR, Table 4

\* Indicates estimate or projection

# Financial and Demographic Data

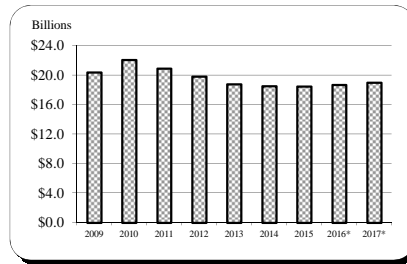
## Assessable Base-Real and Personal Property

Year	Base	% Change
2009	20,421,064,497	14.1%
2010	22,077,626,050	8.1%
2011	20,907,114,686	-5.3%
2012	19,829,611,572	-5.2%
2013	18,808,823,173	-5.1%
2014	18,549,381,425	-1.4%
2015	18,495,548,665	-0.3%
2016*	18,688,384,000	1.0%
2017*	19,016,100,000	1.8%

All years are expressed at 100% of assessed value.

Sources: FY 09-FY 15 Carroll County CAFR, Table 6

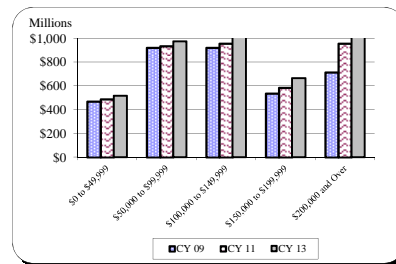
FY 16-FY 17 Maryland State Department of Assessment and Taxation November 2015 Update



## Net Taxable Income

Income Range	CY 09	CY 11	CY 13
\$0 to \$49,999	\$470,459,975	\$488,546,786	\$516,022,413
\$50,000 to \$99,999	921,616,675	936,254,995	973,283,163
\$100,000 to \$149,999	921,882,102	956,334,250	1,015,071,082
\$150,000 to \$199,999	537,136,195	585,765,152	664,060,141
\$200,000 and Over	714,387,650	956,867,597	1,104,418,012

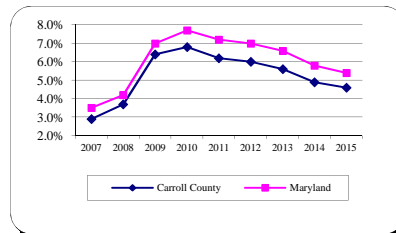
Source: Comptroller of Maryland Income Tax Summary Reports 2009-2013



## Average Annual Unemployment Rates

Year	Carroll County	Maryland
2007	2.9%	3.5%
2008	3.7%	4.2%
2009	6.4%	7.0%
2010	6.8%	7.7%
2011	6.2%	7.2%
2012	6.0%	7.0%
2013	5.6%	6.6%
2014	4.9%	5.8%
2015	4.6%	5.4%

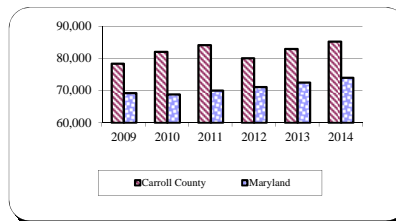
Source: MD Department of Labor, Licensing and Regulation



## Median Household Income

Year	Carroll County	Maryland
2009	78,418	69,193
2010	82,077	68,854
2011	84,117	70,004
2012	80,028	71,122
2013	82,955	72,483
2014	85,274	73,971

Source: U.S. Census Bureau, American Community Survey



\* Indicates estimate or projection

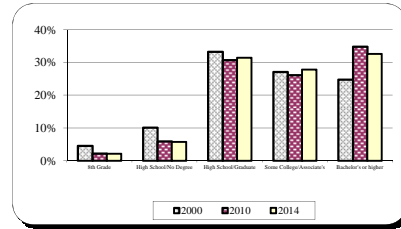
# Financial and Demographic Data

## Educational Attainment

	2000	2010	2014
Population 25+ years			
8th Grade	4.6%	2.2%	2.1%
High School/No Degree	10.1%	6.0%	5.8%
High School/Graduate	33.3%	30.8%	31.5%
Some College/Associate's	27.2%	26.1%	27.9%
Bachelor's or higher	24.8%	34.9%	32.7%

Sources: US Census Bureau - 2000, 2010 Census

US Census Bureau - 2015 American Community Survey



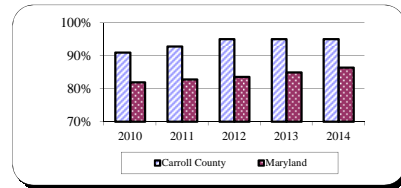
## Graduation Rates

Year	Carroll County	Maryland
2010	91.0%	82.0%
2011	92.8%	82.8%
2012	95.0%	83.6%
2013	95.0%	85.0%
2014	95.0%	86.4%

Source: 2014 Maryland Report Card

Note: The percentages represent the 4 Year Adjusted Cohort Rate.

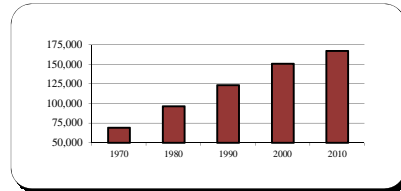
95% in a category indicates >95 and corresponding counts have been suppressed.



## Population

Year	Carroll County
April 1, 1970 Census	69,006
April 1, 1980 Census	96,356
April 1, 1990 Census	123,372
April 1, 2000 Census	150,897
April 1, 2010 Census	167,134

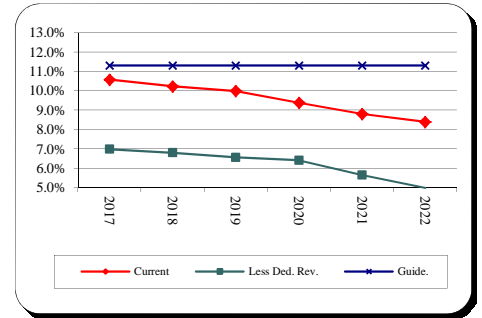
Source: US Census



# Financial and Demographic Data

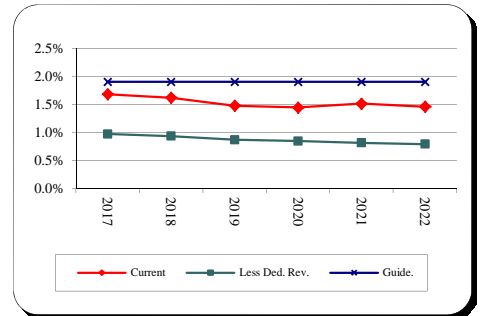
## General Fund Debt Service/General Fund Revenue

<u>Fiscal Year</u>	<u>Current Position</u>	<u>Revenue and Supported D/S</u>	<u>County Guideline</u>
2017	10.6%	7.0%	11.3%
2018	10.2%	6.8%	11.3%
2019	10.0%	6.6%	11.3%
2020	9.4%	6.4%	11.3%
2021	8.8%	5.7%	11.3%
2022	8.4%	5.0%	11.3%



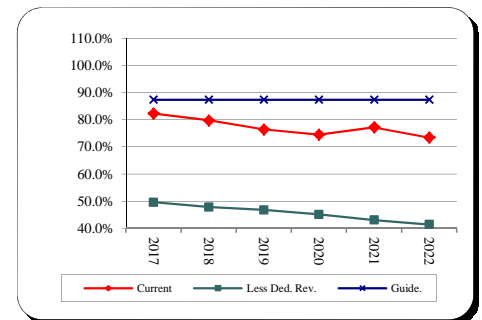
## General Fund Debt/Assessable Base

<u>Fiscal Year</u>	<u>Current Position</u>	<u>Revenue and Supported Debt</u>	<u>County Guideline</u>
2017	1.68%	0.97%	1.90%
2018	1.62%	0.93%	1.90%
2019	1.48%	0.87%	1.90%
2020	1.44%	0.85%	1.90%
2021	1.51%	0.81%	1.90%
2022	1.46%	0.79%	1.90%



## General Fund Debt/General Fund Revenue

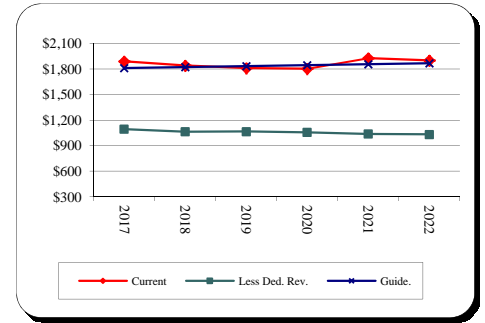
<u>Fiscal Year</u>	<u>Current Position</u>	<u>Revenue and Supported Debt</u>	<u>County Guideline</u>
2017	82.3%	49.5%	87.4%
2018	79.8%	47.8%	87.4%
2019	76.5%	46.7%	87.4%
2020	74.5%	45.1%	87.4%
2021	77.2%	43.0%	87.4%
2022	73.5%	41.4%	87.4%



# Financial and Demographic Data

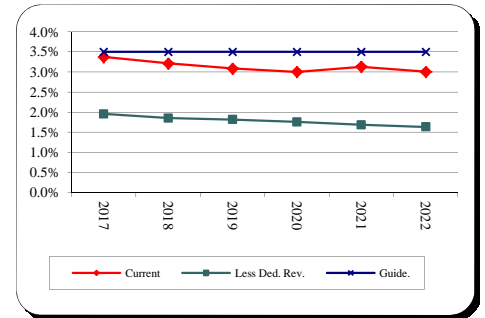
## General Fund Debt/Capita

<u>Fiscal Year</u>	<u>Current Position</u>	<u>Revenue and Supported Debt</u>	<u>County Guideline</u>
2017	1,889	1,093	1,811
2018	1,841	1,062	1,822
2019	1,810	1,065	1,834
2020	1,802	1,055	1,845
2021	1,928	1,038	1,856
2022	1,900	1,031	1,868



## General Fund Debt/Personal Income

<u>Fiscal Year</u>	<u>Current Position</u>	<u>Revenue and Supported Debt</u>	<u>County Guideline</u>
2017	3.4%	2.0%	3.5%
2018	3.2%	1.9%	3.5%
2019	3.1%	1.8%	3.5%
2020	3.0%	1.8%	3.5%
2021	3.1%	1.7%	3.5%
2022	3.0%	1.6%	3.5%



## Total Debt Service/General Fund Revenue

<u>Fiscal Year</u>	<u>Current Position</u>	<u>Less Ded. Rev. Revenue and Supported DS</u>	<u>County Guideline</u>
2017	11.4%	7.0%	12.0%
2018	11.1%	6.8%	12.0%
2019	10.9%	6.6%	12.0%
2020	10.3%	6.4%	12.0%
2021	9.7%	5.7%	12.0%
2022	9.3%	5.0%	12.0%

