



Transportation Master Plan Chapter 6

Planned Roadway Projects in Finksburg

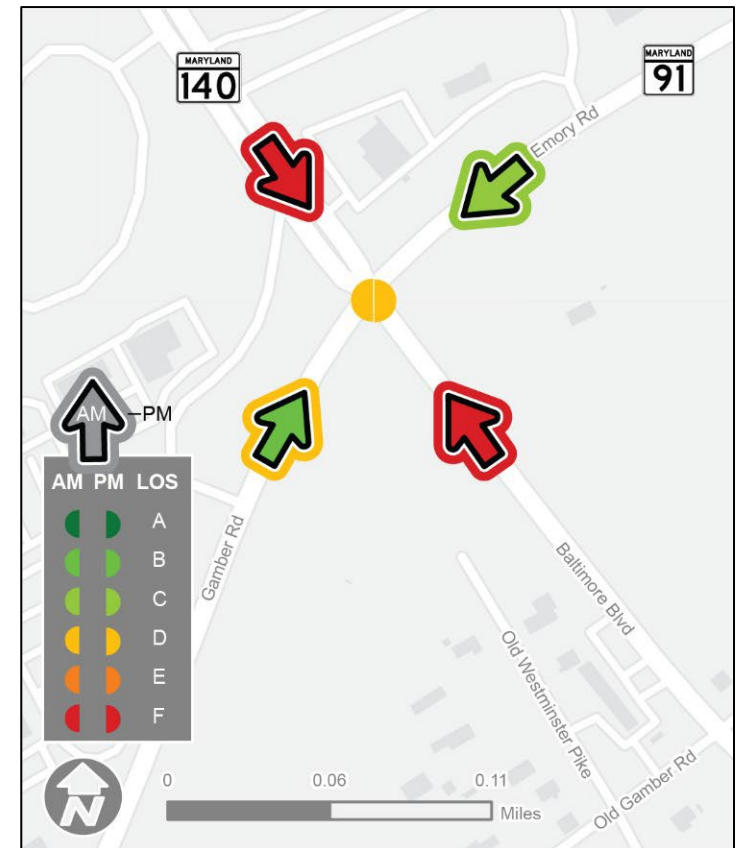
Planning and Zoning Commission
February 21, 2023



Profile of Finksburg

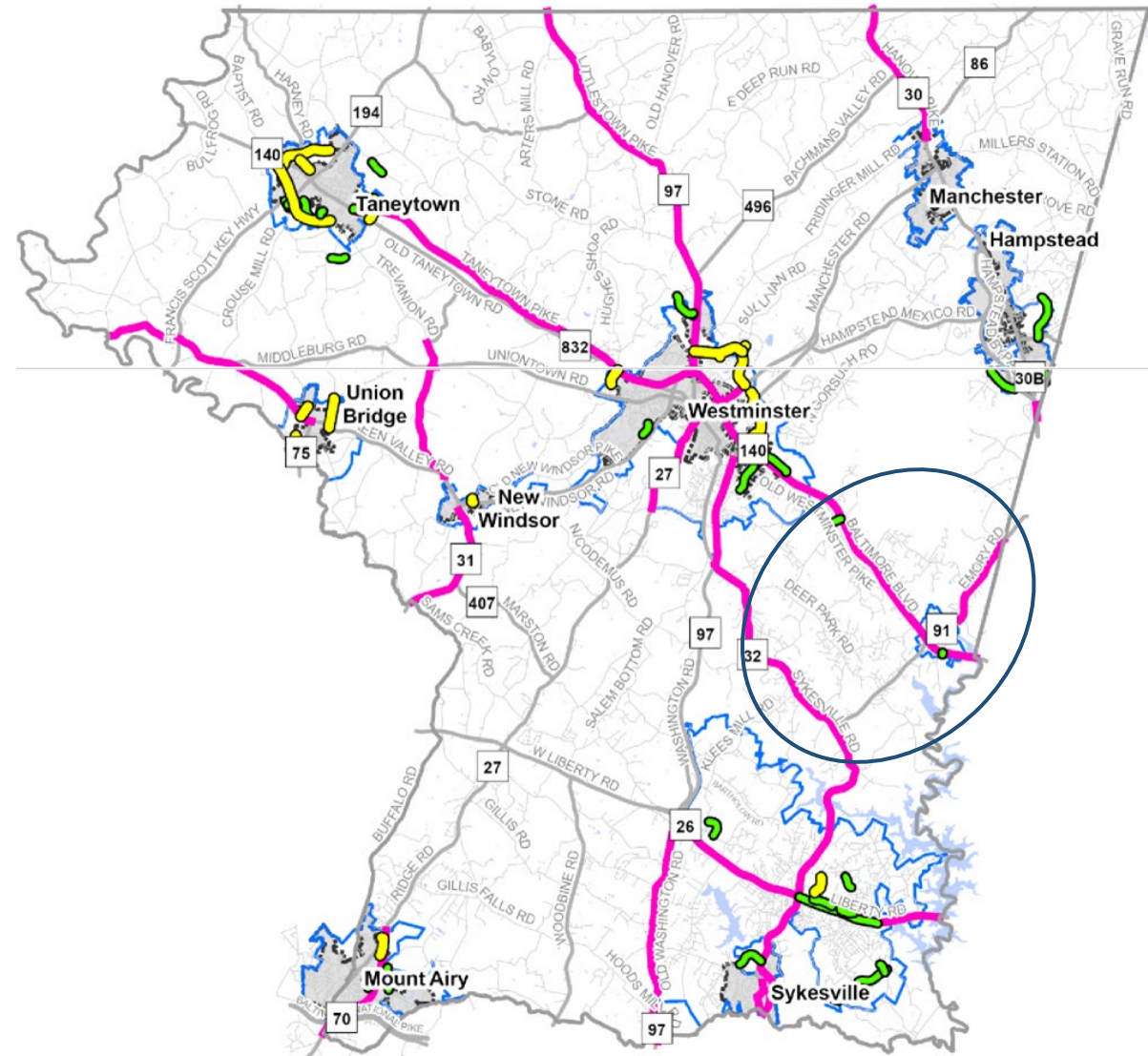
- Residents commute to:
 - Baltimore County and City
 - Westminster
 - Howard County
- Workers commute from:
 - within the subarea
 - Westminster
 - Baltimore County
- Low overall growth rate

- MD 140/91:
congestion
and crashes

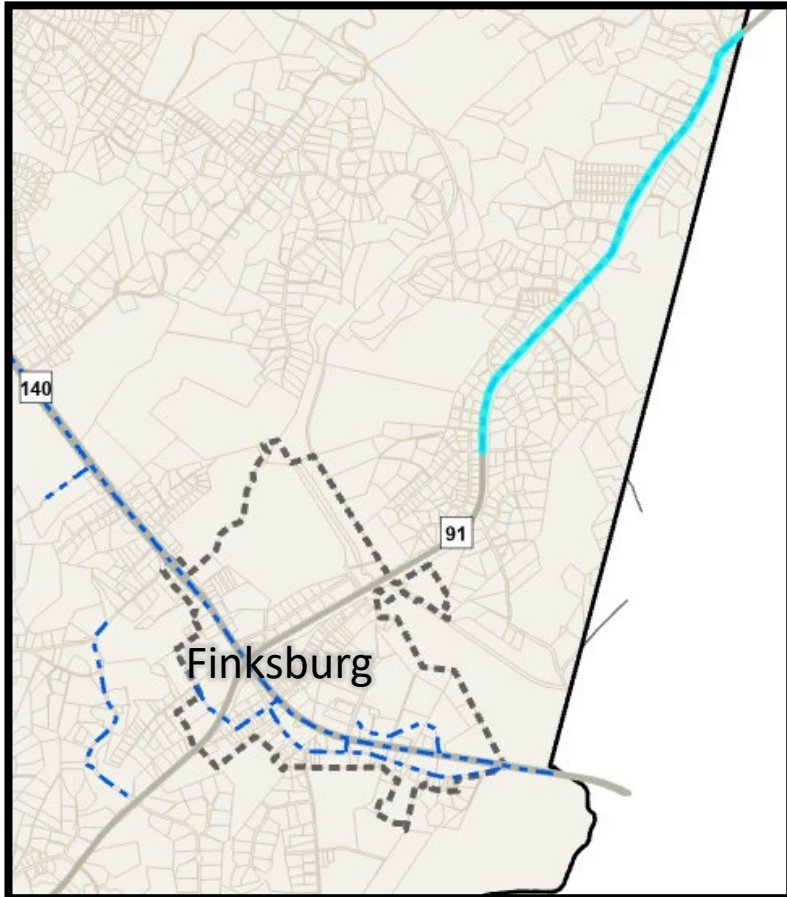


Roads Included

- 3 Maryland State Highway Projects
- 0 Planned Major Streets (County and Municipal)
- 2 Planned Neighborhood Connections (County and Municipal)



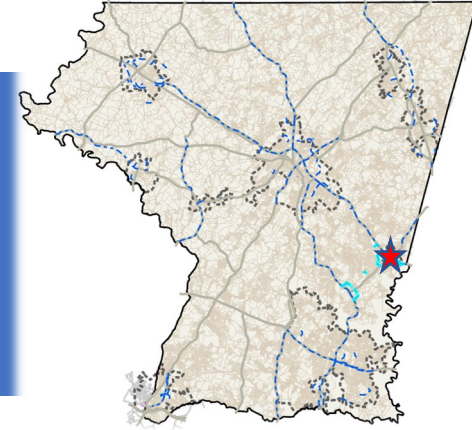
MD 91 (Emory Road)



North of MD 140 to Baltimore County line

- Major collector
- 1.9 miles
- 2 lane reconstruction
- This project has not been identified as a priority for the County

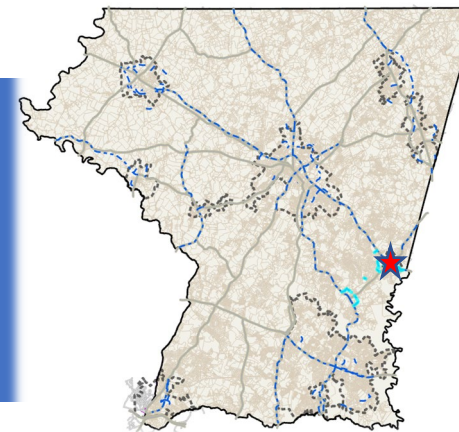
MD 140 (Baltimore Boulevard)



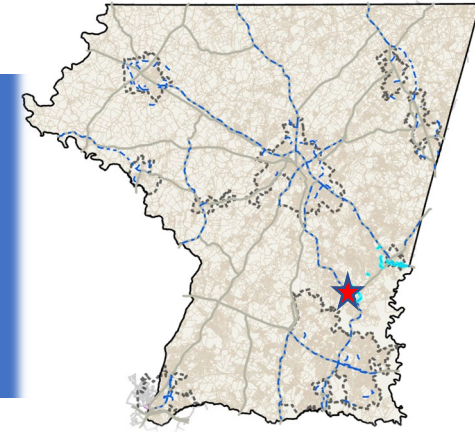
Baltimore County line to west of MD 91

- Principal Arterial
- 1.4 miles
- Divided highway reconstruct with access controls and an interchange at MD 91
- MPPI from Ch. 5
- This project has been identified as a priority for the County, included in
 - BRTB's Long Range Transportation Plan
 - Carroll County's FY23 CTP Priority Letter
- Design is funded for MD 91/MD 140 "jughandle"

MD 140 (Baltimore Boulevard) cont.



MD 32 (Sykesville Road)



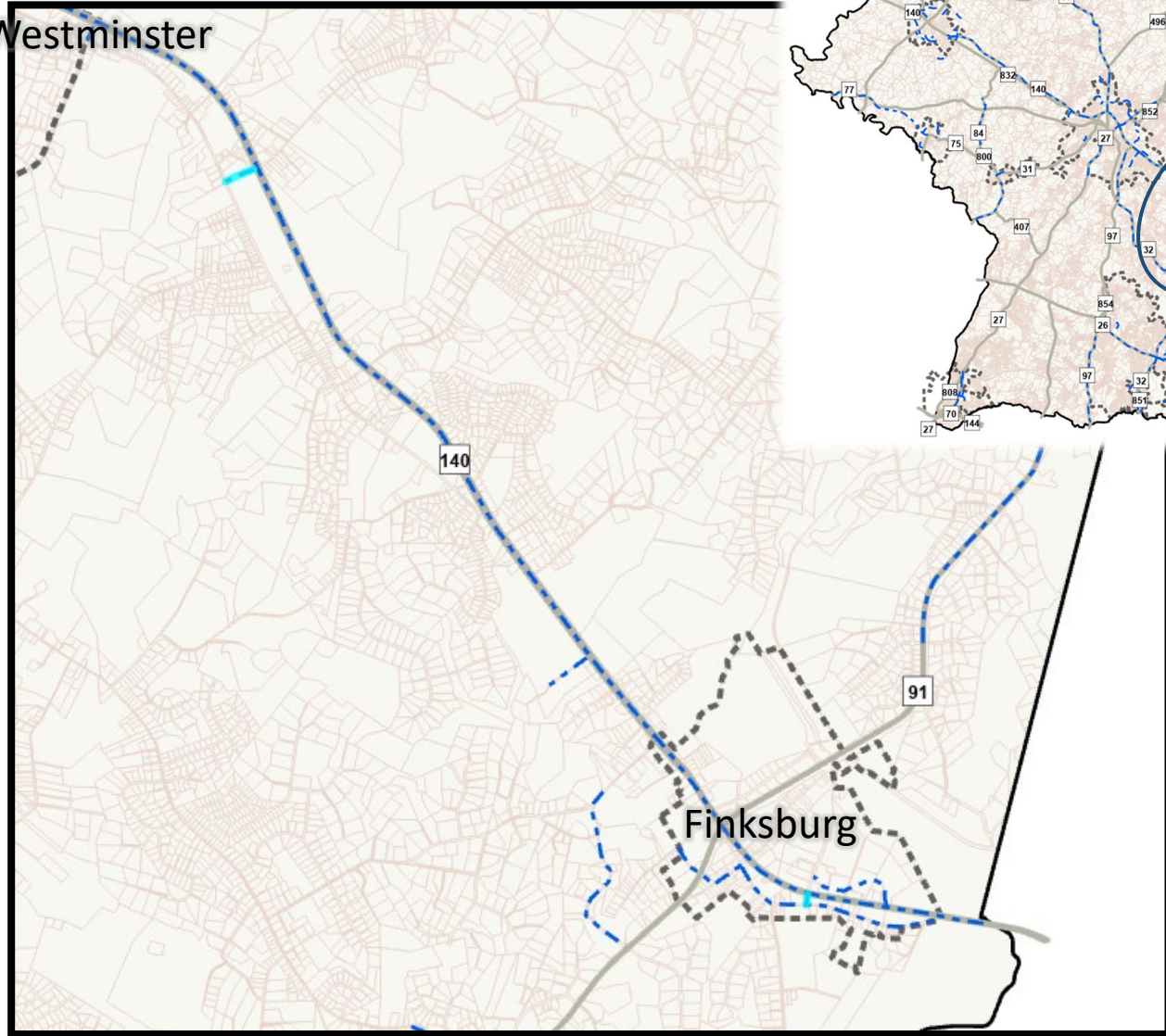
Pine Knob Road to MD 97

- Minor collector, major collector, minor arterial, principal arterial
- 8.9 miles
- 2 lane reconstruct
- This project has not been identified as a priority for the County

0 Planned Major Streets (PMS)
(County and Municipal)

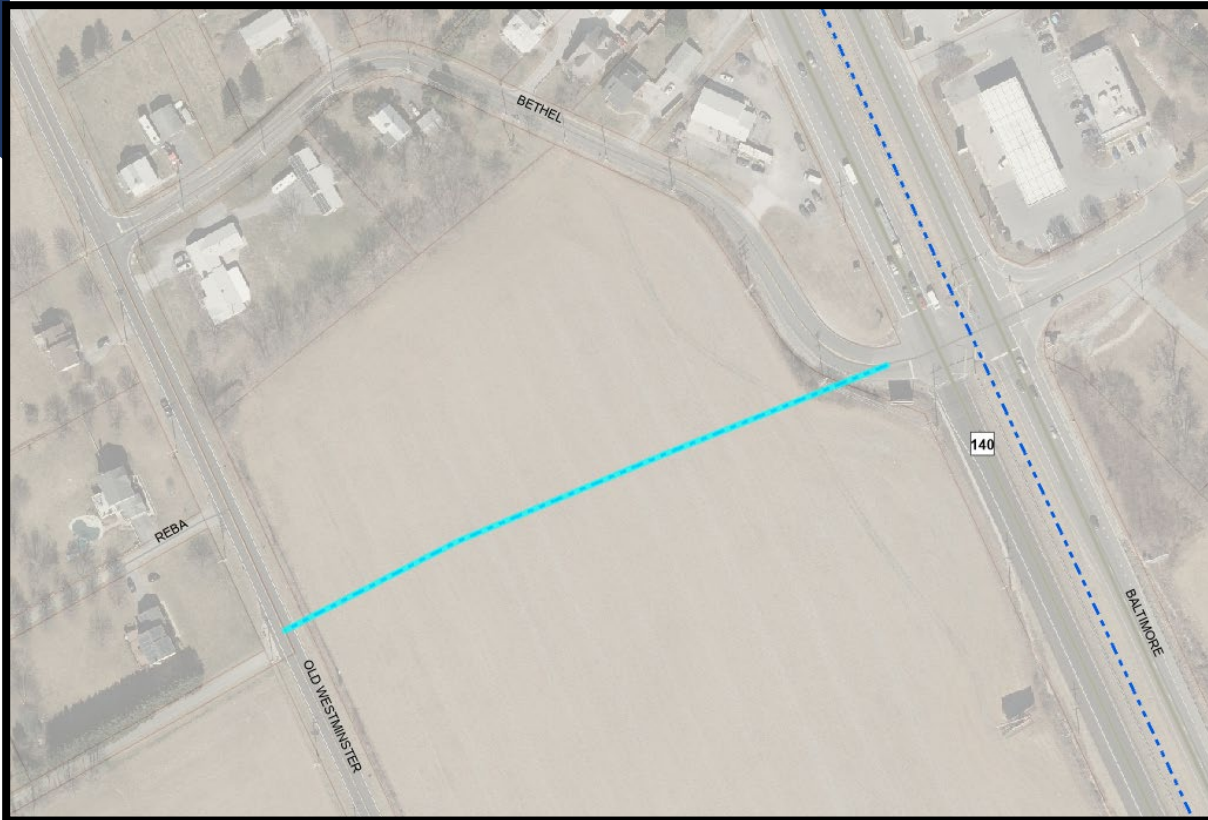
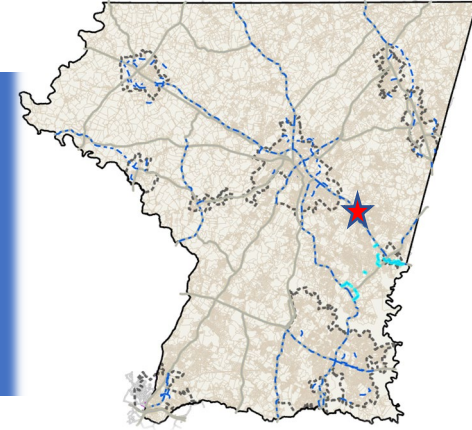
2 Planned Neighborhood Connections (PNC)
(County and Municipal)

Westminster



Finksburg

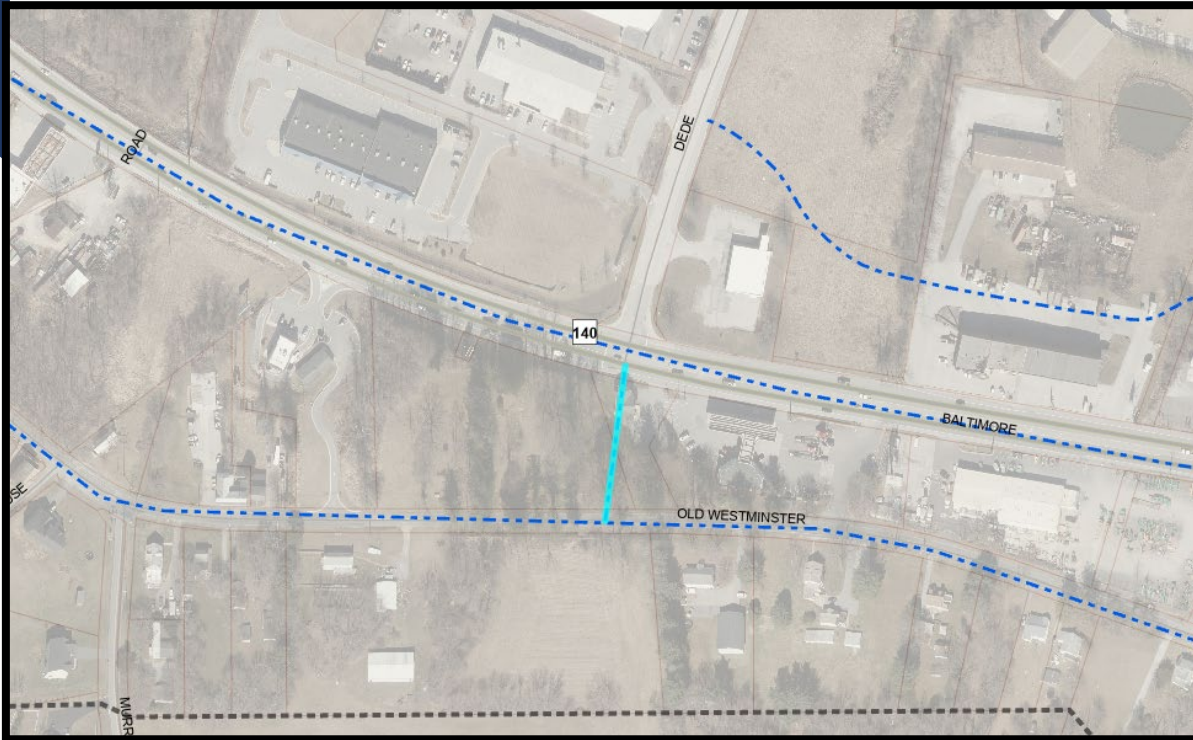
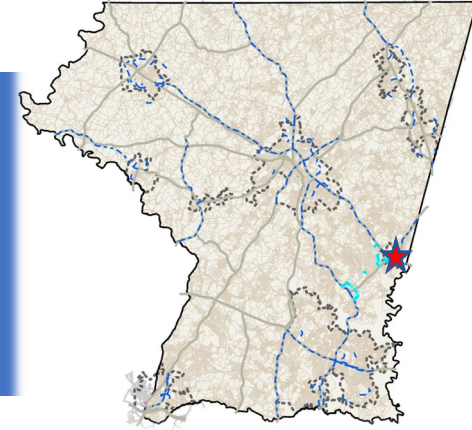
Bethel Road Realignment



Realignment of Bethel Road

- Minor Collector Rural
- 738 Feet (.14 mile)
- From MD 140 to Old Westminster Pike
- Provide better geometry and straighten a sharp curve

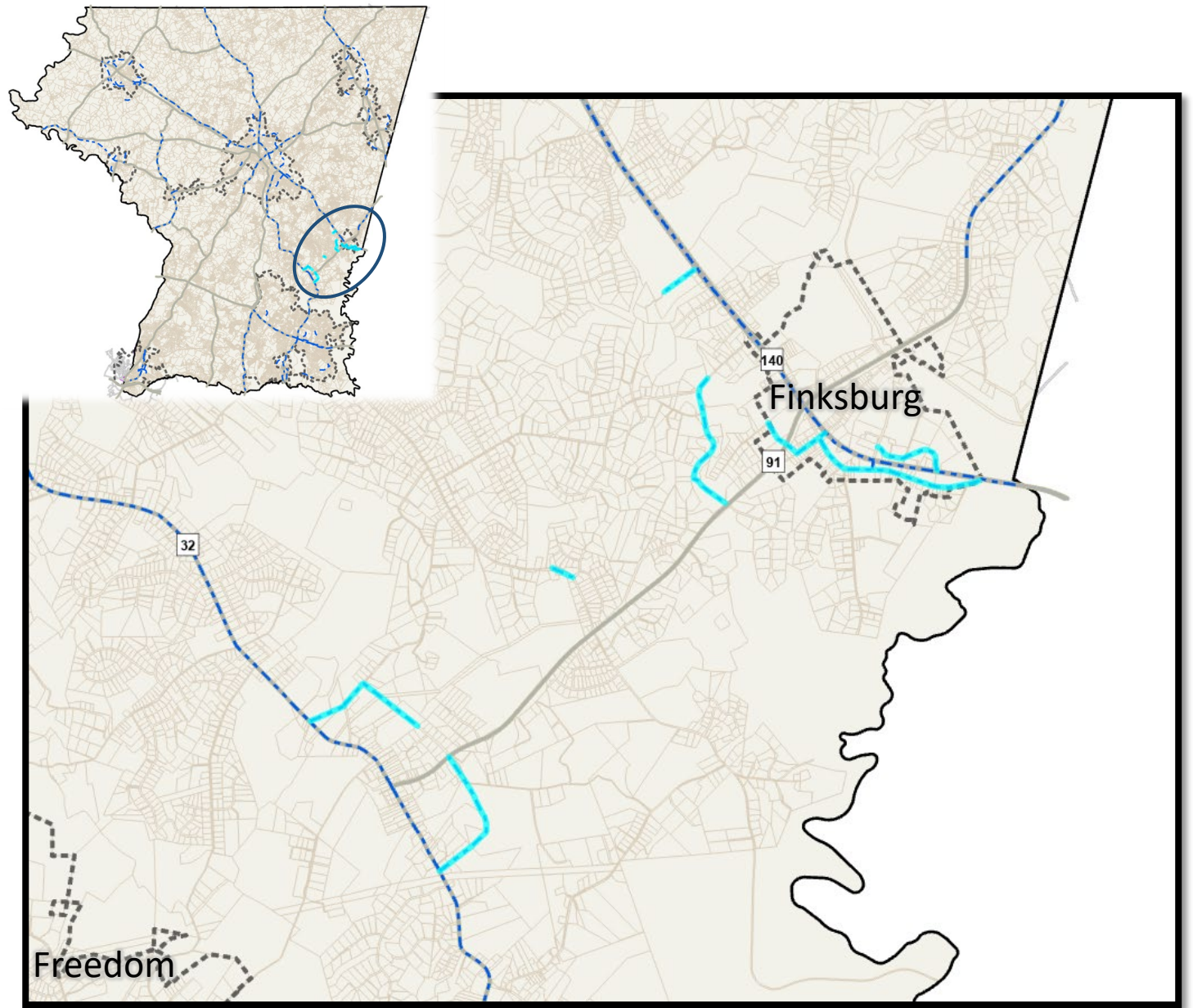
Dede Road Extended



Extension of Dede Road

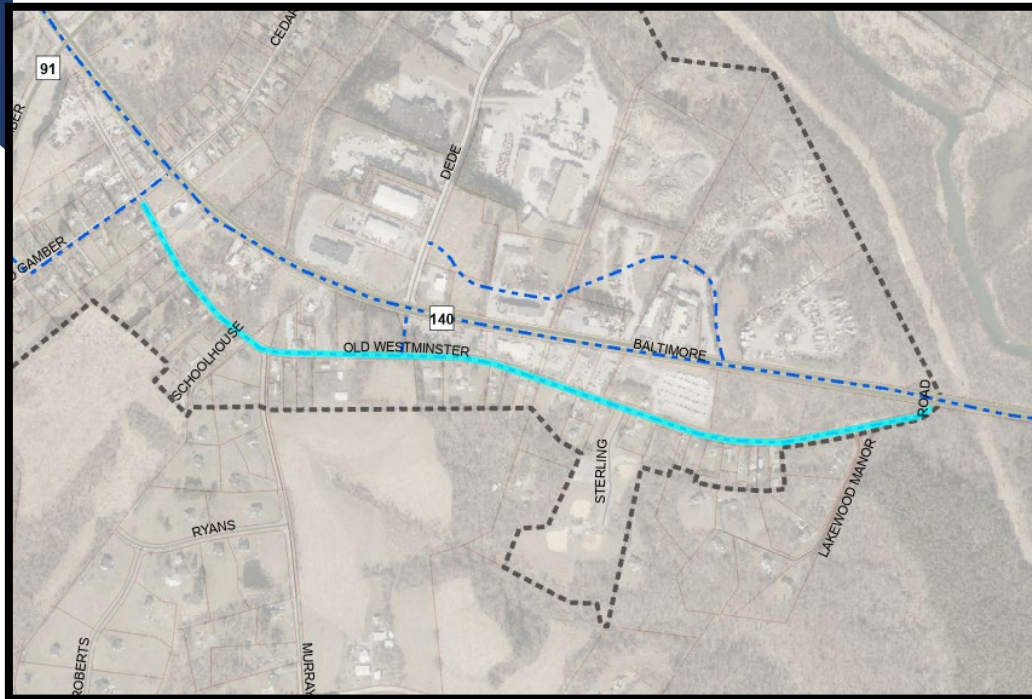
- 262 Feet (.05 mile)
- Minor Collector Urban
- From MD 140 to Old Westminster Pike
- MPPI from Ch. 5
- Improve traffic circulation and redundancy in the network
- Provide access to the properties along the south side of MD 140

9 Roads
Recommended
to be
Eliminated
from the Plan



Old Westminster Pike Improvements

Deer Park Road Realignment



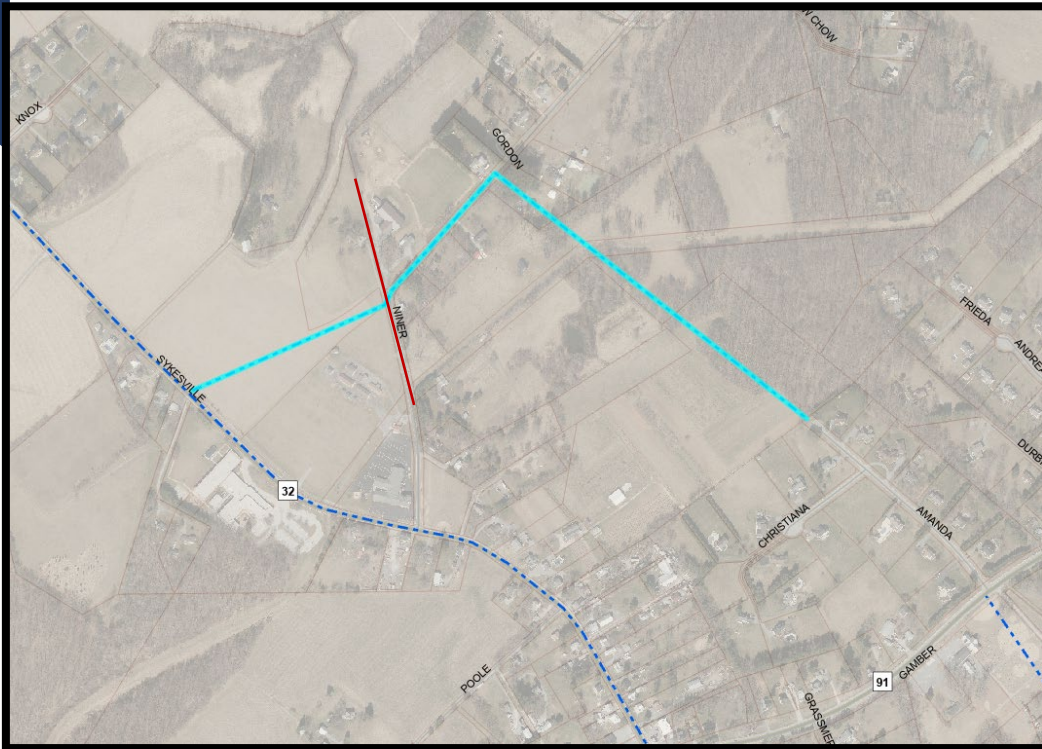
- Reason for Removal: not a Planned Major Street; upgrade of existing road



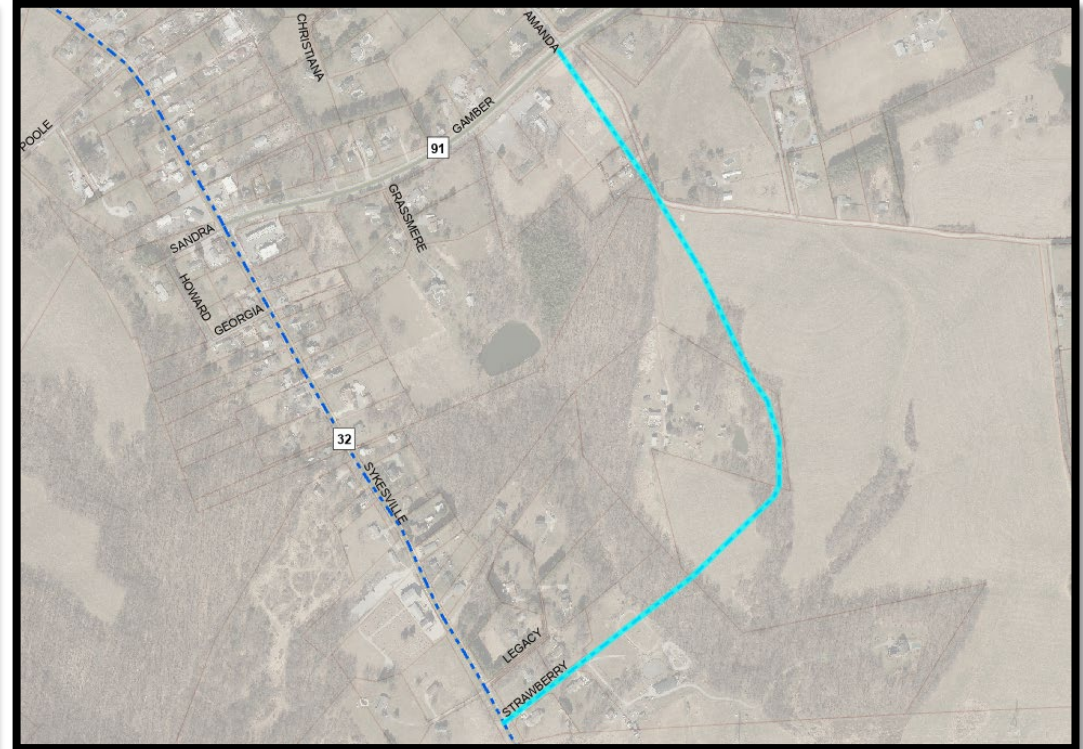
- Reason for Removal: ROW not available

Gamber Bypass North Niner Road Relocated

Gamber Bypass South

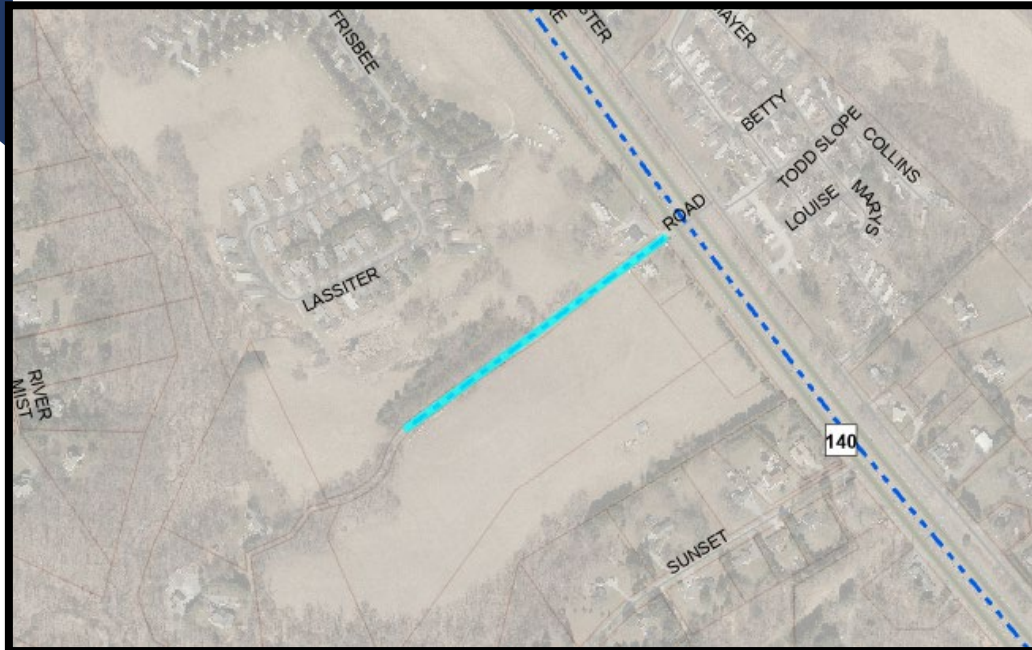


- Reason for Removal: no longer feasible



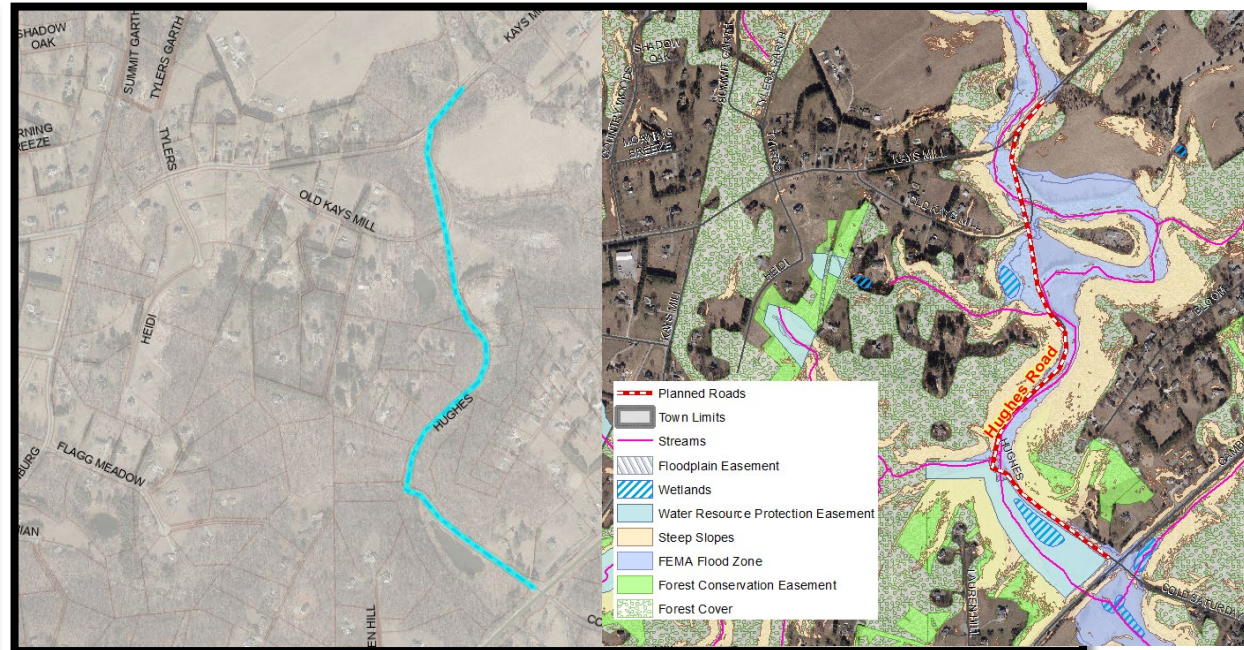
- Reason for Removal: no longer feasible

Hillendale Orchard Access Road



- Reason for Removal: access management issues

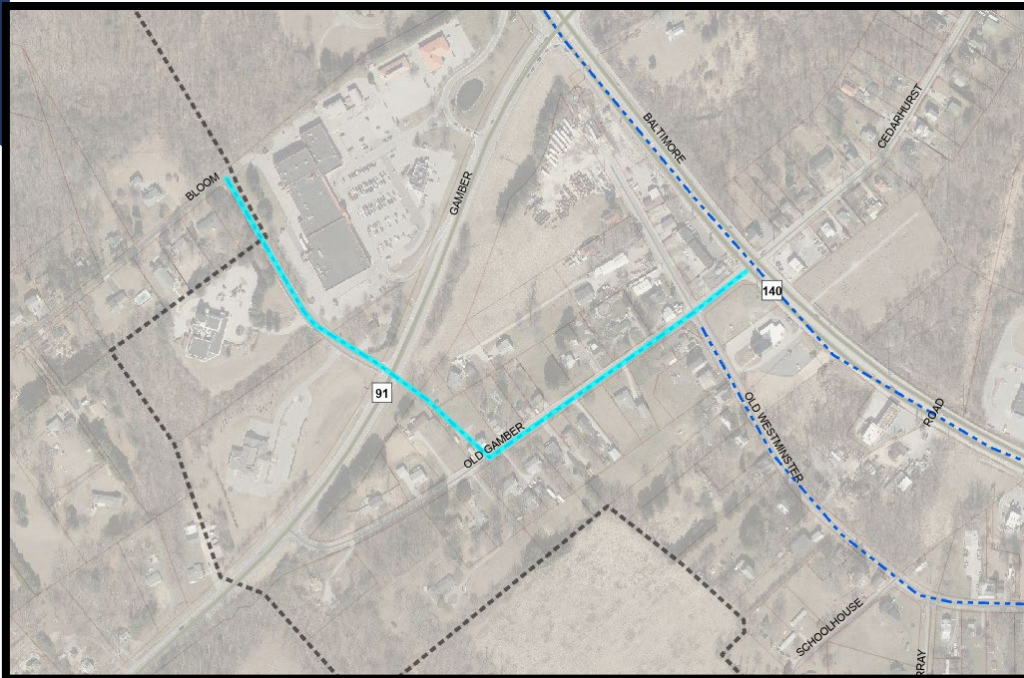
Hughes Road



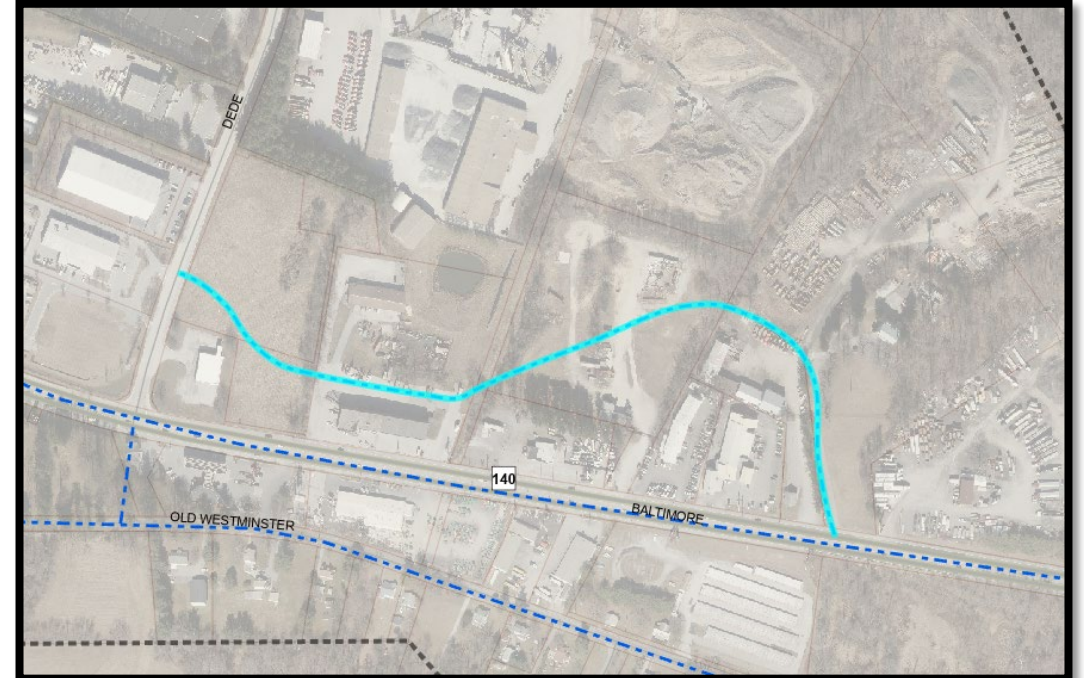
- Reason for Removal: no longer feasible

Old Gamber Road/Bloom Road

Walnut Park Internal Circulation Road



- Reason for Removal: removed in 2013 FCP



- Reason for Removal: no longer feasible

Consistency with
2013 Finksburg
Corridor Plan

**2013 Finksburg
Corridor Plan**

**TMP Recommended
Road Project**

- | | |
|---|-------|
| • Dede Road ----- | • YES |
| • Walnut Park Internal
Circulation Road----- | • NO |
| • Old Westminster Pike
Improvements ----- | • NO |

