



**Welcome to the  
2024 Carroll County Homeless Services Summit**



# CARROLL COUNTY Housing Study



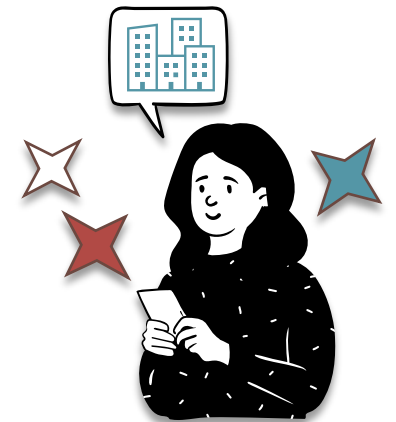
For the first time since 2005, Carroll County, is completing a new Housing Study to provide a detailed analysis of the current housing stock – its *availability, accessibility, adequacy, and affordability* - as well as an assessment of the *housing needed to meet future demand*. This analysis will be informed by significant data analysis and engagement with stakeholders and community members and will inform strategic, actionable fair housing goals and priorities.

**You have a unique perspective and important insight into the county's housing needs, and your input can help inform strategic and actionable housing goals and priorities for Carroll County.**

Go to [carrollcountymd.gov/housingstudy](https://carrollcountymd.gov/housingstudy)



or scan



# Carroll County Homeless Services Summit

## Learning Objectives

- Recognize and list available services in Carroll County aimed at supporting individuals at risk of homelessness, including shelter services, housing programs, aging services, and food security initiatives.
- Participate in conversations about effective approaches to supporting individuals and families at risk of or experiencing homelessness, with insights from local service providers and advocates.
- Understand the unique challenges and experiences of people who have navigated homelessness, particularly youth, by engaging in discussions and hearing stories from individuals with firsthand experience.
- Consider the unique issues faced by youth experiencing homelessness and examine potential strategies to better support this demographic through discussions with experts and youth with lived experience.
- Explore Treatment Options in Carroll County and understand how to access and navigate these services.
- Identify Opportunities for Workforce Development and Education.
- Understand the steps required to enroll or engage in various programs and services discussed during the summit, including information about cost, duration, and application processes.
- Establish connections with local service providers, system leaders, advocates, and other participants, building a network that can facilitate further collaboration and resource sharing.

# Homeless System Data

The Point-in-Time Count (PIT) is mandated by the Department of Housing and Urban Development and includes a count of sheltered and unsheltered homeless persons carried out on one night in the last 10 calendar days of January. The sheltered count occurs each year while the unsheltered count is only required biannually.

PIT Count Year & Type	Adult Only		Adult and Child		Total		
	Households	Persons	Households	Persons	Households	Persons	
2022 Sheltered	45	45	6	20	51	65	
2022 Unsheltered	11	11	0	0	11	11	
2022 Total	55	55	6	20	62	76	
2023 Sheltered	62	62	10	37	72	99	
2023 Unsheltered	23	23	0	0	23	23	
2023 Total	85	85	10	37	95	122	
2024 Sheltered	78	81	10	30	88	111	
2024 Unsheltered	Not Conducted in 2024						

# Homeless System Data

The Longitudinal Systems Analysis is another annual report due to the Department of Housing and Urban Development, which includes the following data for people experiencing homelessness each federal fiscal year (October 1-September 30):

- Demographic characteristics (age, race, gender)
- Length of time homeless and patterns of system use
- Demographic characteristics of special populations (veterans, unaccompanied youth, people experiencing chronic homelessness)
- Exit destinations for those who exit the homeless services system

- FY2022 Longitudinal Systems Analysis Data
  - 355 Households – 441 People Served
  - 91 Days Homeless on Average
  - 31% Exits to Permanent Destinations
  - 10% of Households returned to the homeless system within six months of exiting to a permanent destination
- FY2023 Longitudinal Systems Analysis Data
  - 392 Households – 491 People Served
  - 126 Days Homeless on Average
  - 32% Exits to Permanent Destinations
  - 8% of Households returned to the homeless system within six months of exiting to a permanent destination